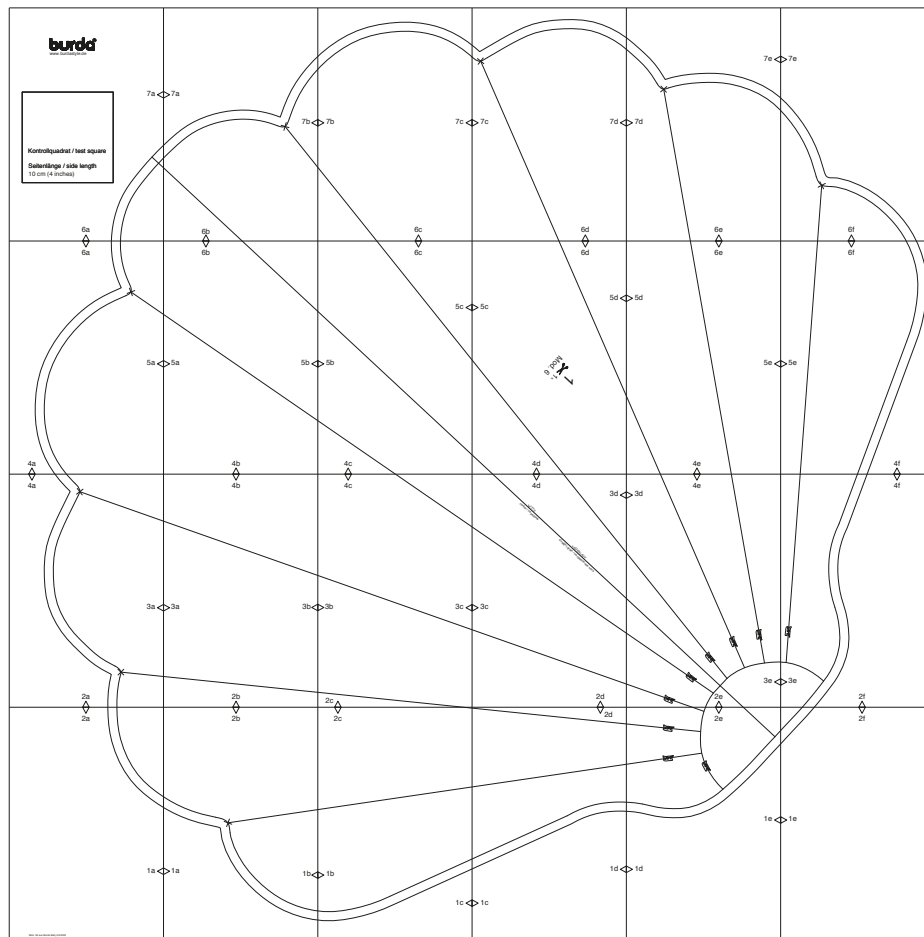


burda baby Download-Schnitt

Modell 06 burda baby 02/2020



Copyright 2020 by Verlag Aenne Burda GmbH & Co. KG, Hubert-Burda Platz 2, D-77652 Offenburg
Sämtliche Modelle, Schnittteile und Zeichnungen stehen unter Urheberschutz, gewerbliches Nacharbeiten ist untersagt.
Der Verlag haftet nicht für Schäden, die durch unsachgemäße Handhabung des Schnitts, der Materialien,
unsachgemäße Ausführung der Tipps und Anleitungen oder unsachgemäße Nutzung der Modelle entstehen.



2a

1a

2b

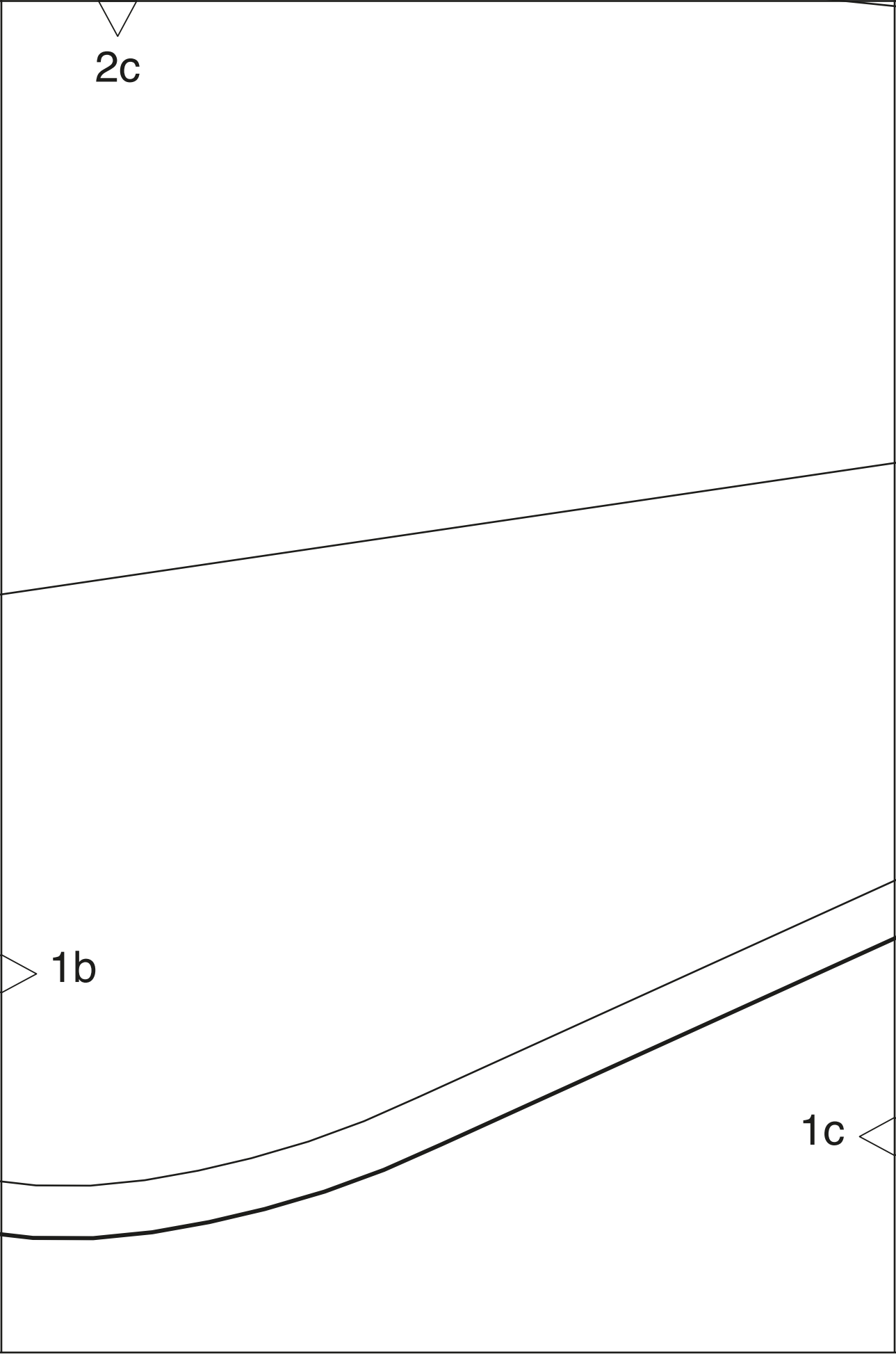
1a

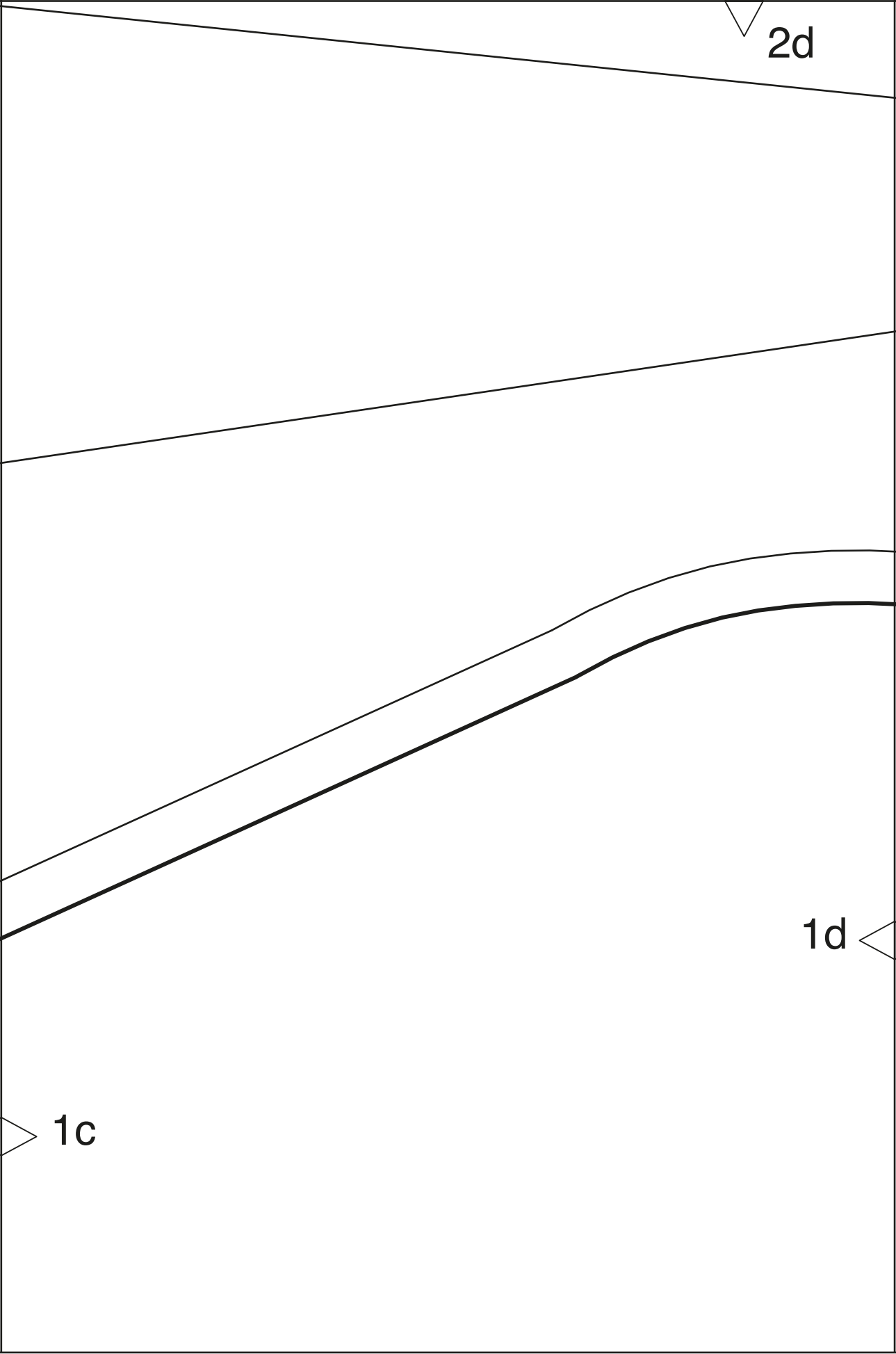
1b

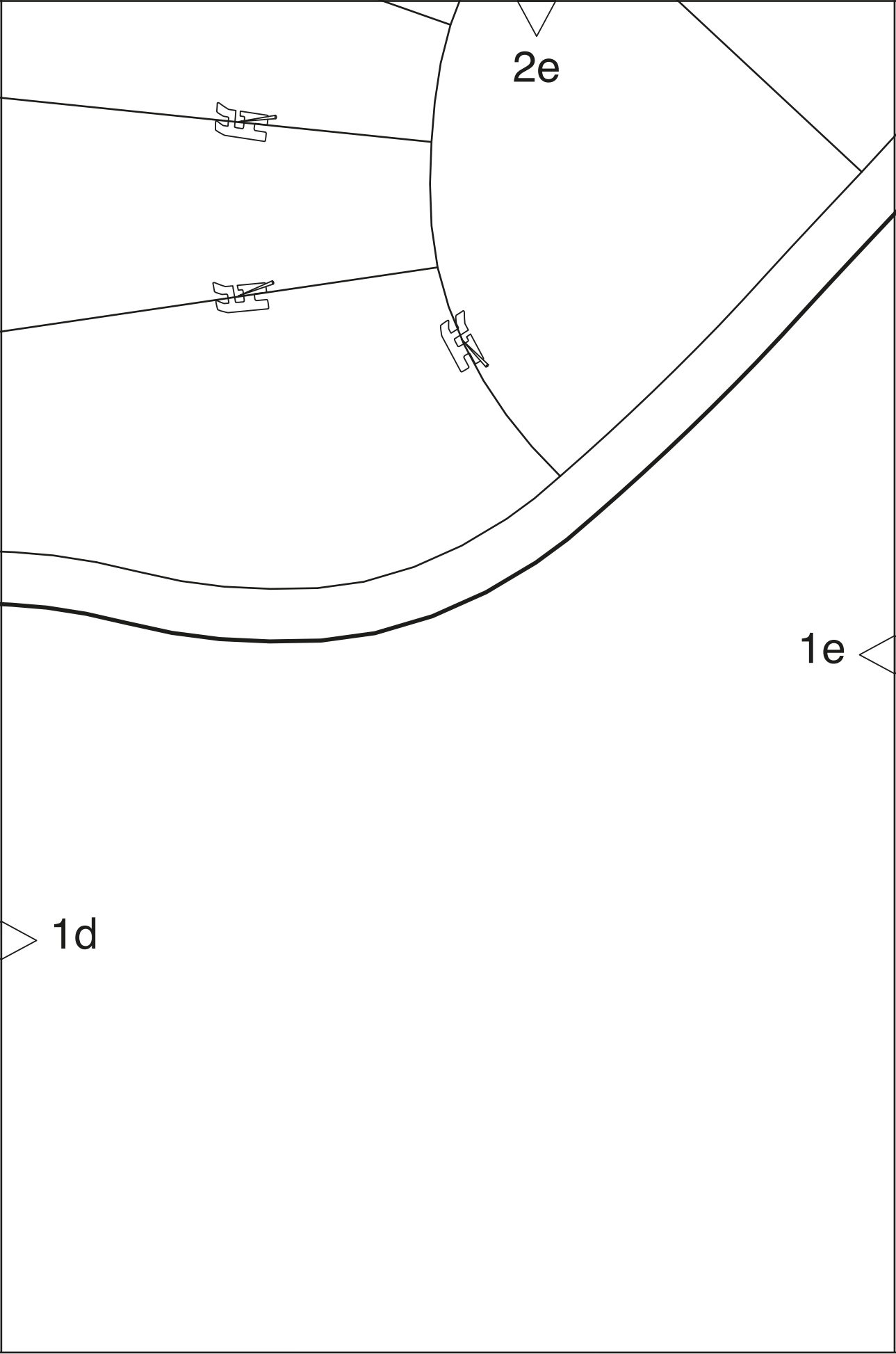
2c

1b

1c







2e

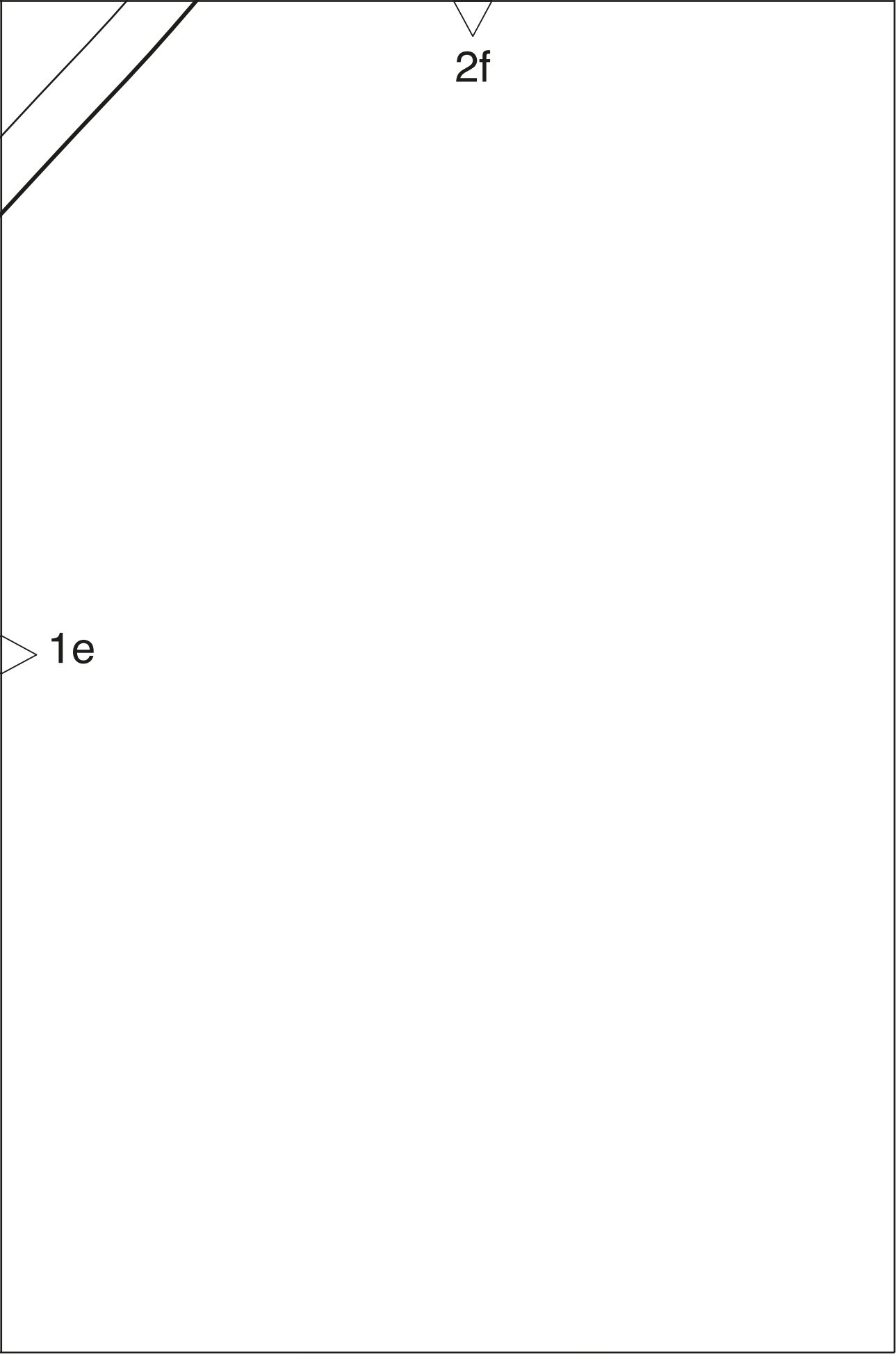
1e

1d

E

E

E



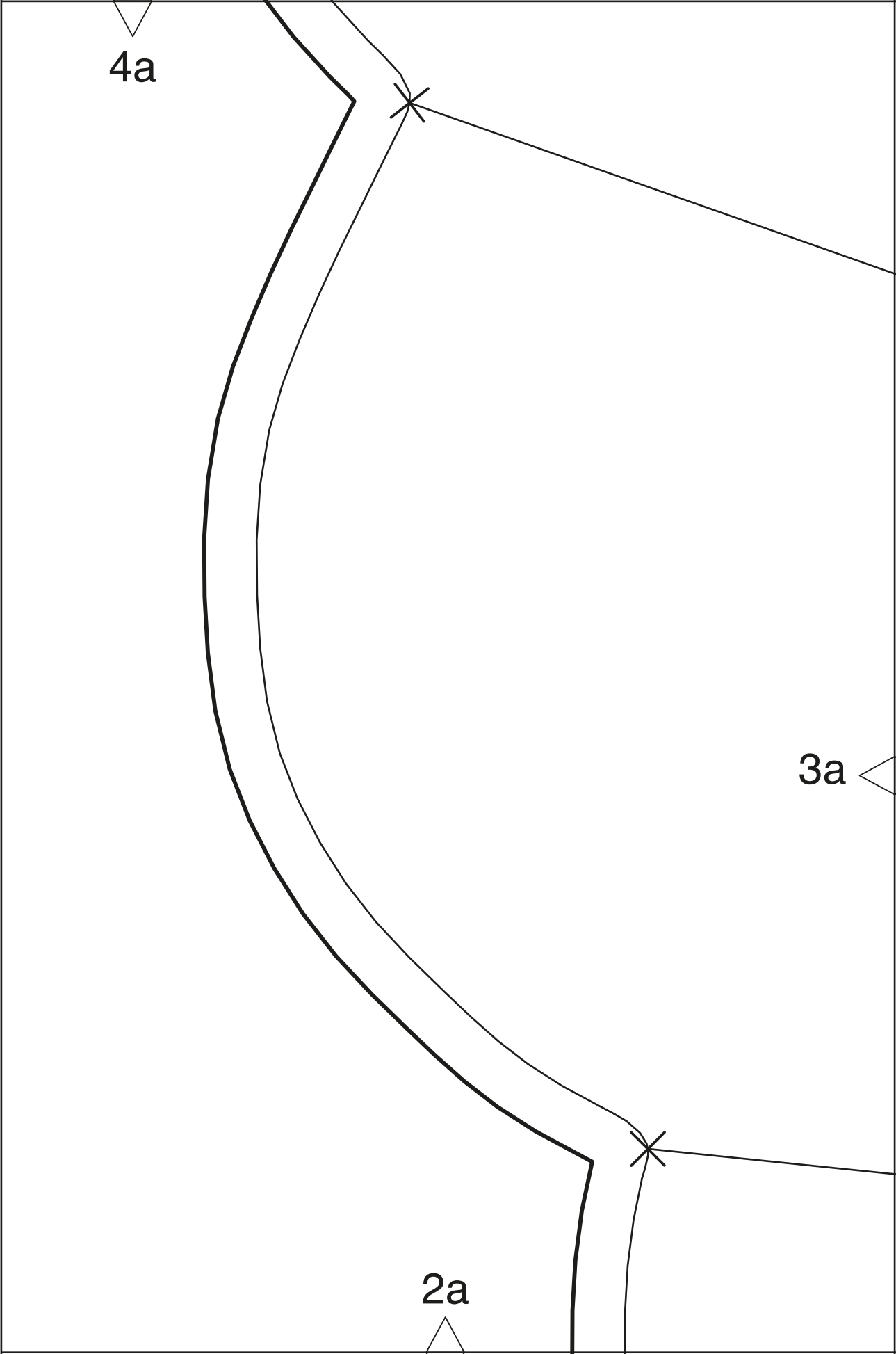
2f

1e

4a

3a

2a



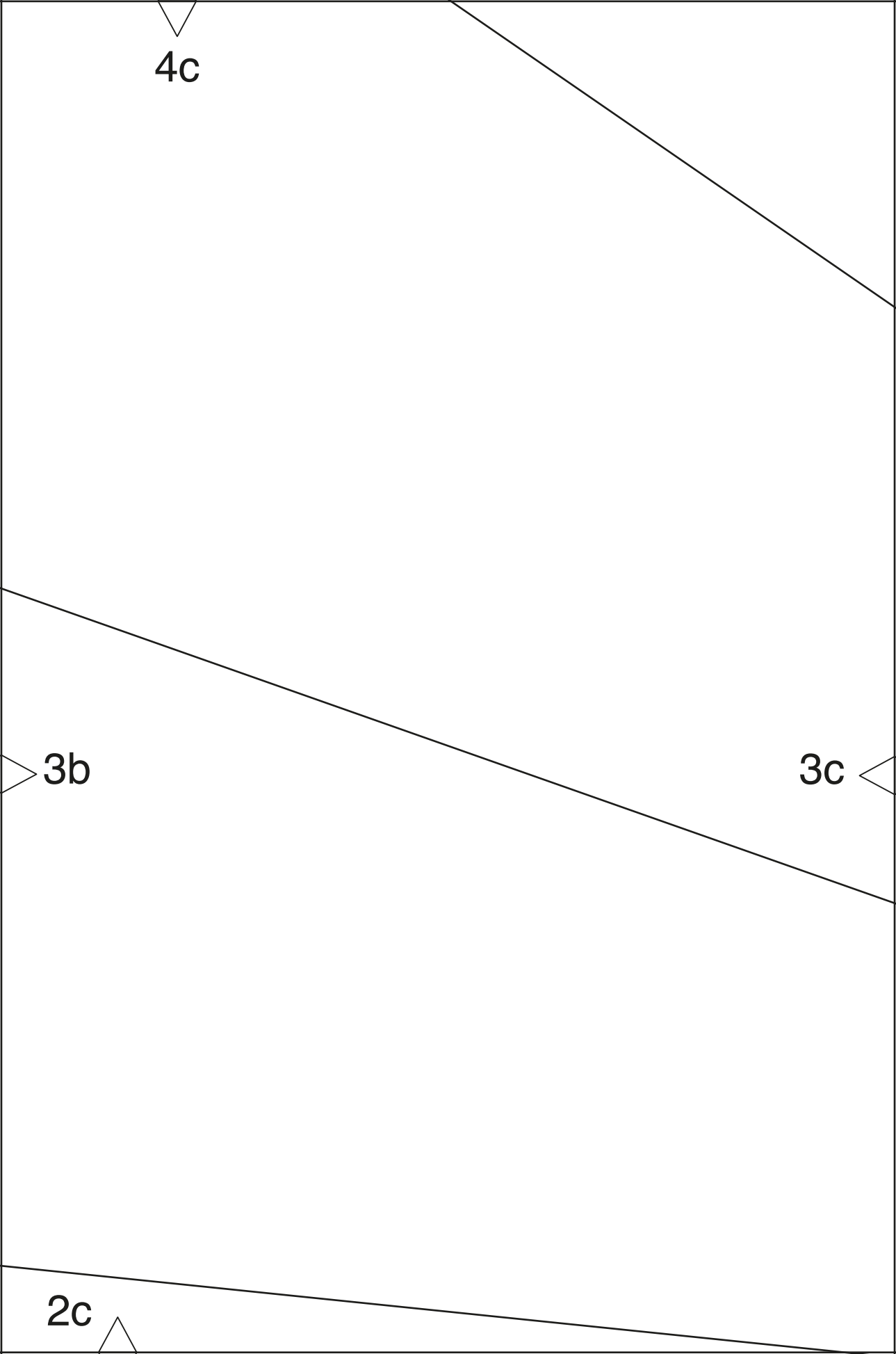
A diagram of a trapezoid with a horizontal top edge and a horizontal bottom edge. The top edge is shorter than the bottom edge. A diagonal line runs from the top-left corner to the bottom-right corner. The bottom edge is labeled '2b' with an upward-pointing arrowhead. The top edge is labeled '4b' with a downward-pointing arrowhead. The left vertical edge is labeled '3a' with a rightward-pointing arrowhead. The right vertical edge is labeled '3b' with a leftward-pointing arrowhead.

4b

2b

3a

3b



4d

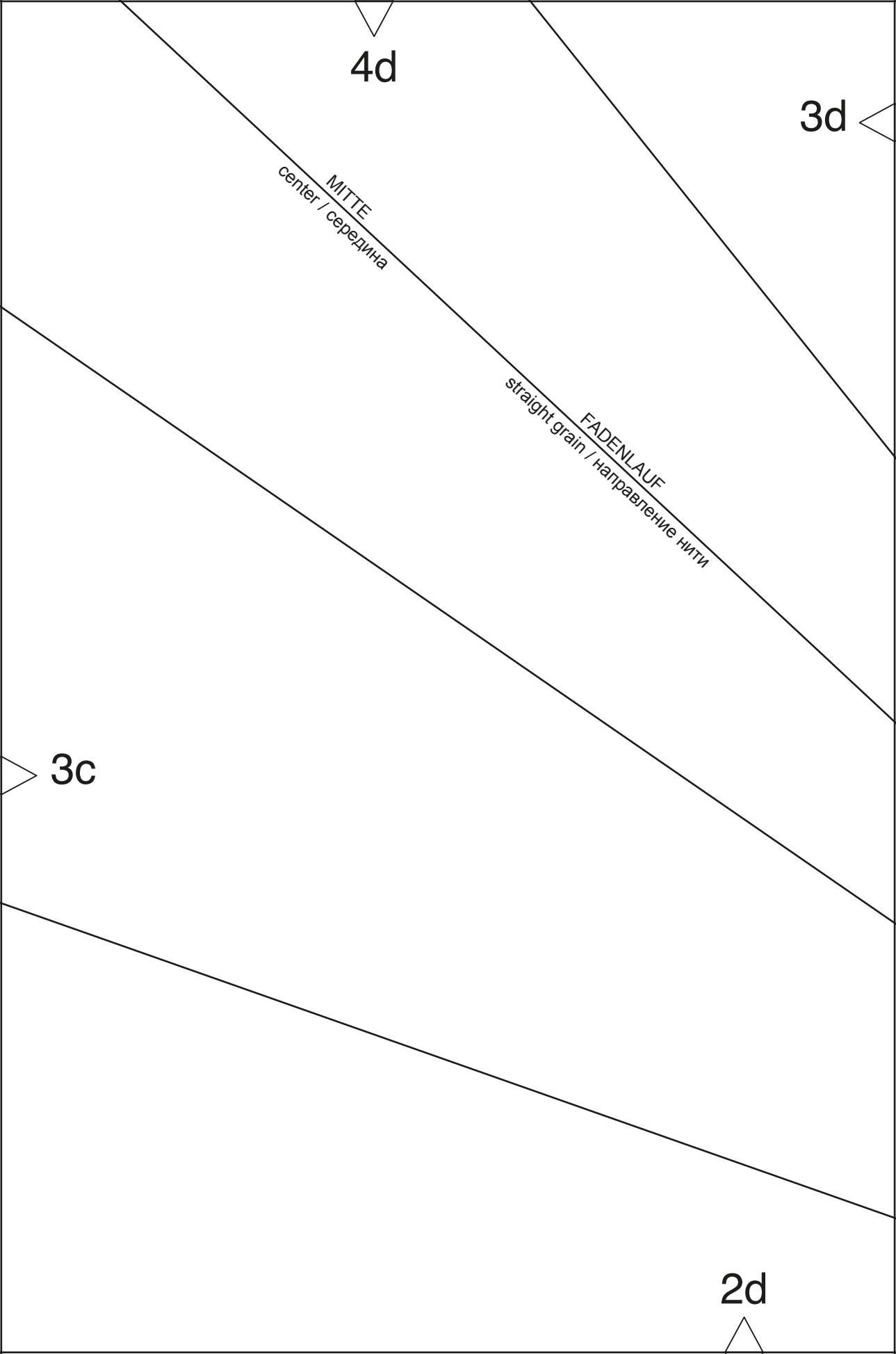
3d

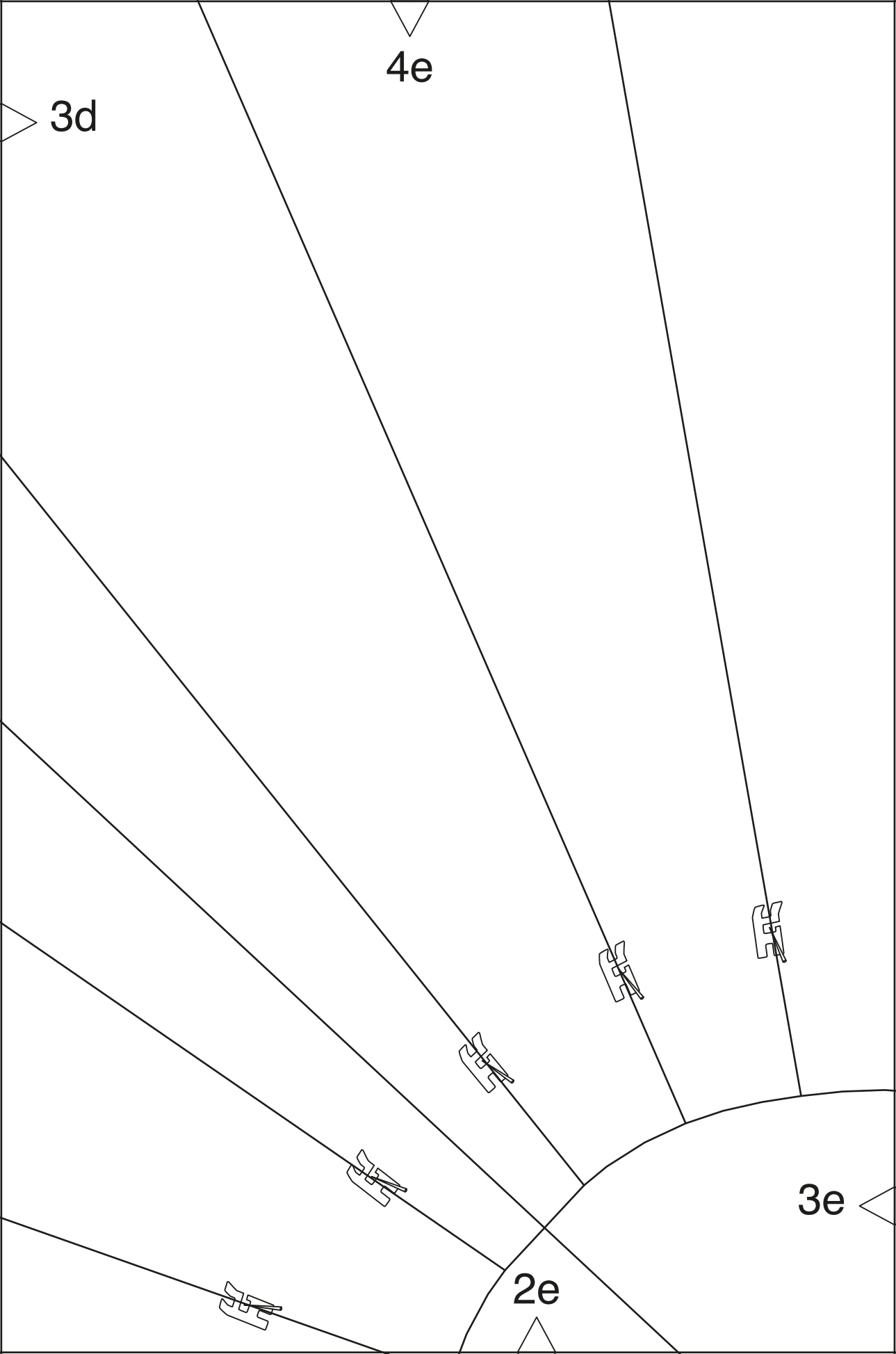
MITTE
center / середина

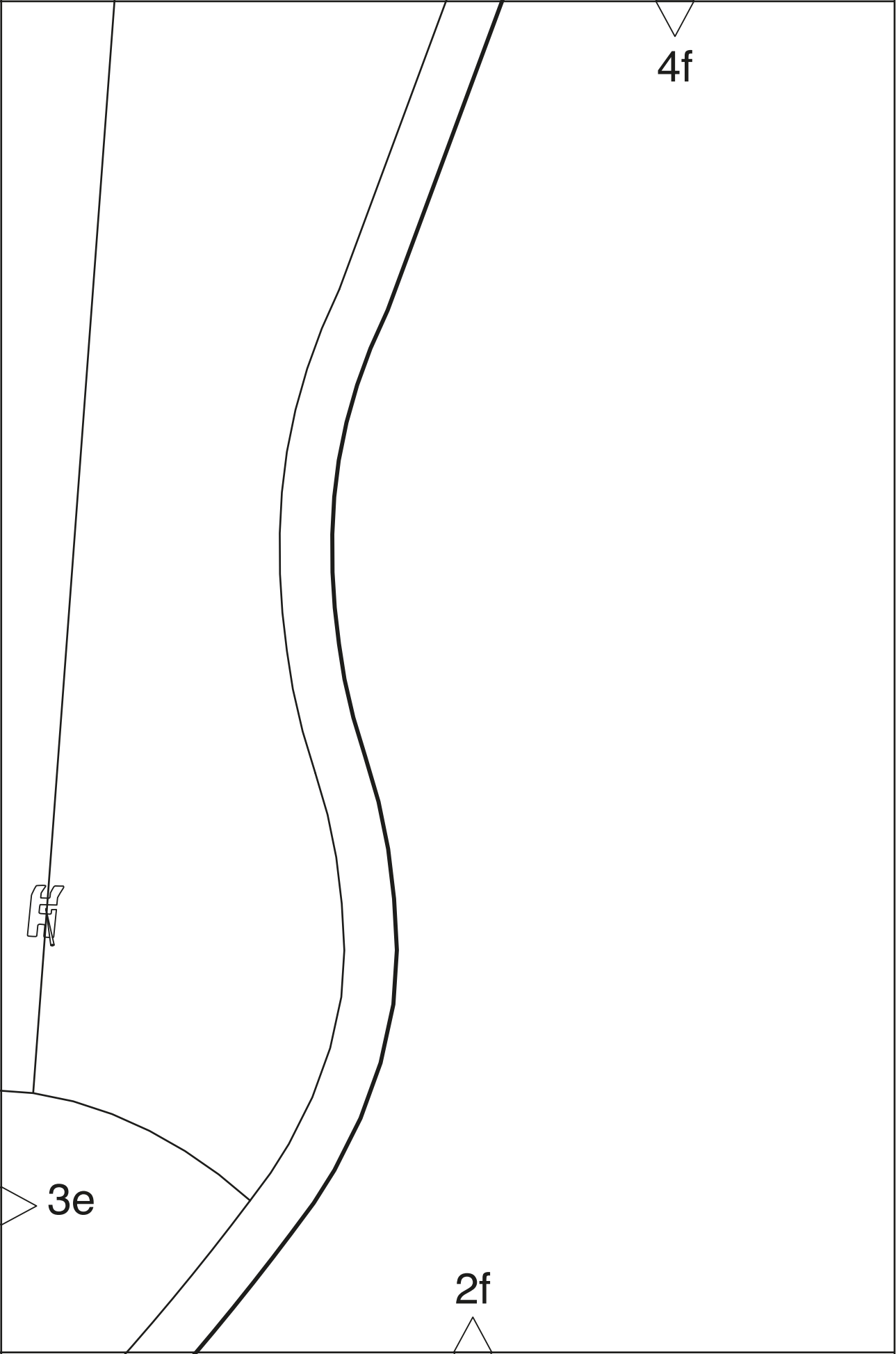
FADENLAUF
straight grain / направление нити

3c

2d





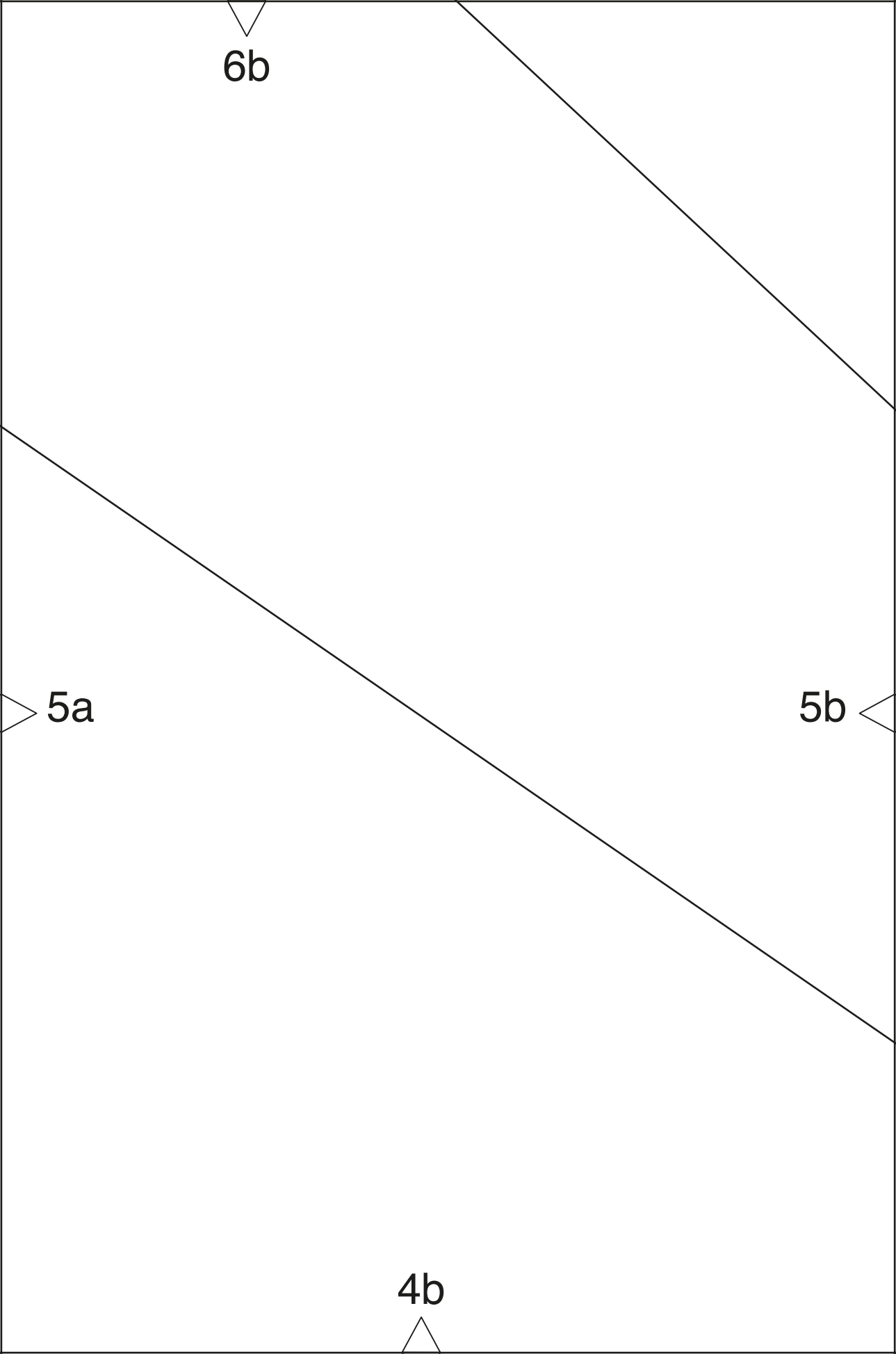


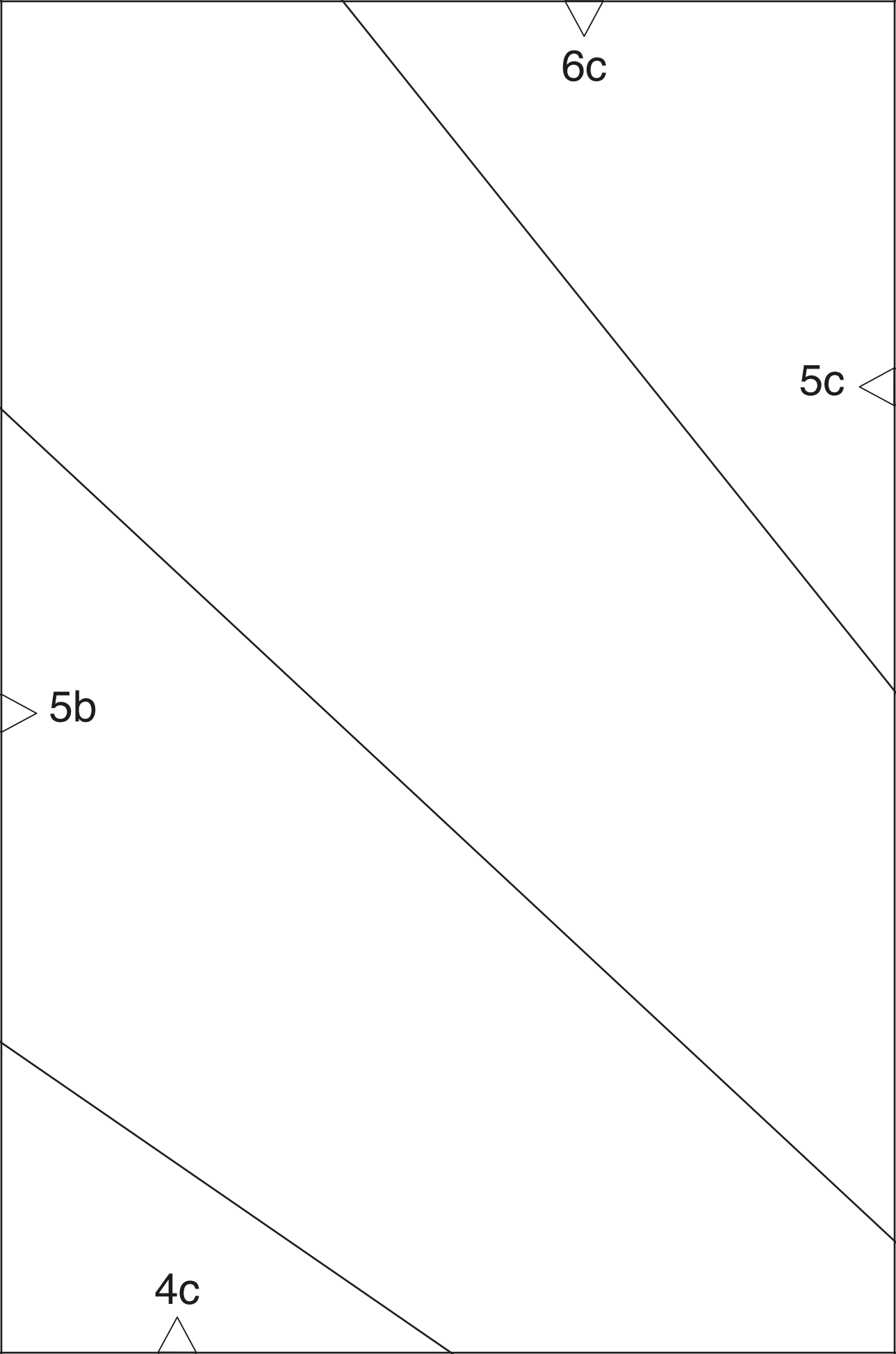
6a

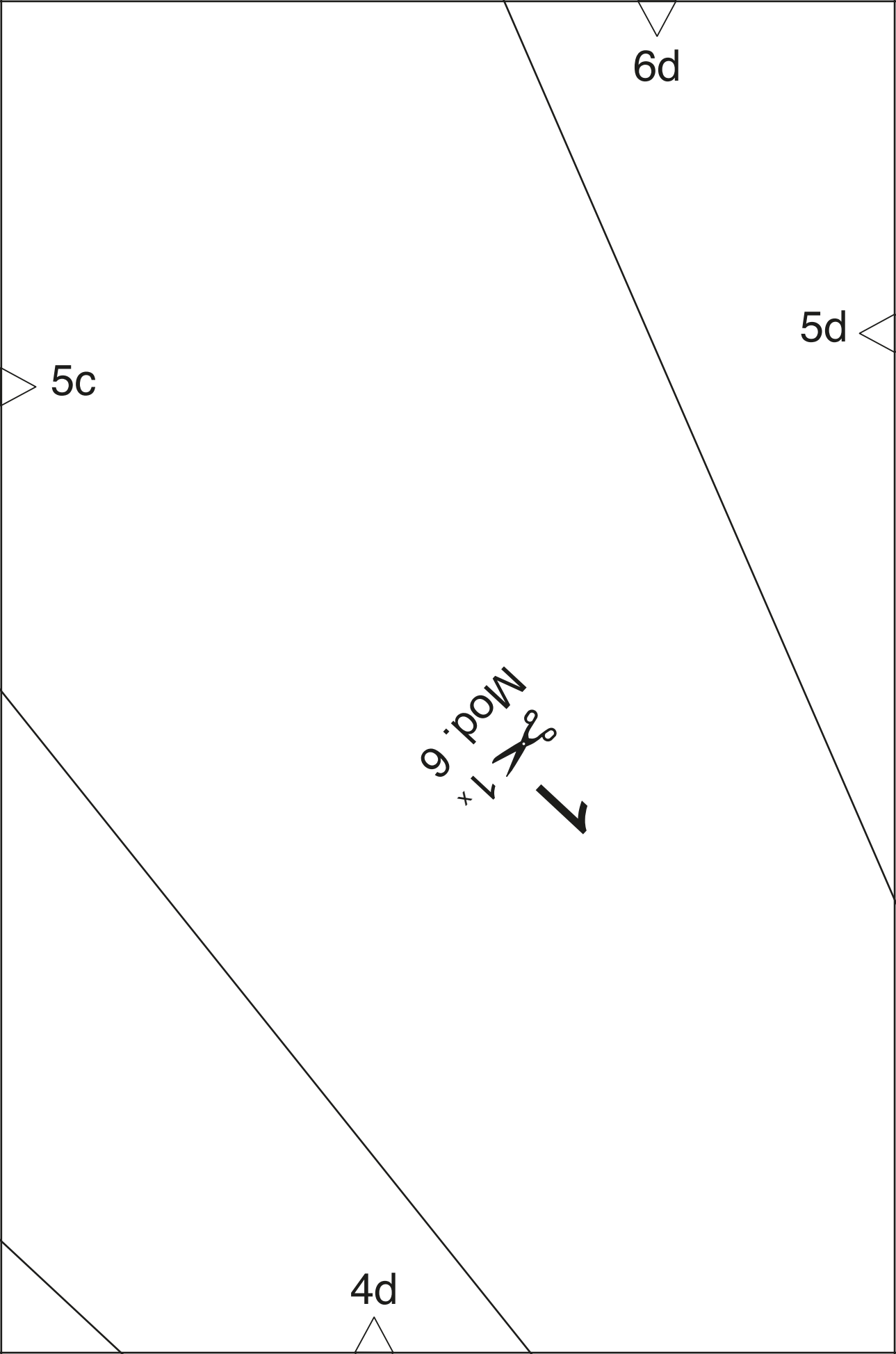
The diagram shows a curved, semi-circular component with a central hole. A thick black line represents the outer profile, and a thin black line represents the inner profile. A small cross-shaped mark is located at the top-right corner of the inner profile. Three labels with leader lines point to specific features: '4a' at the bottom-left, '5a' at the right edge, and '6a' at the top edge.

5a

4a







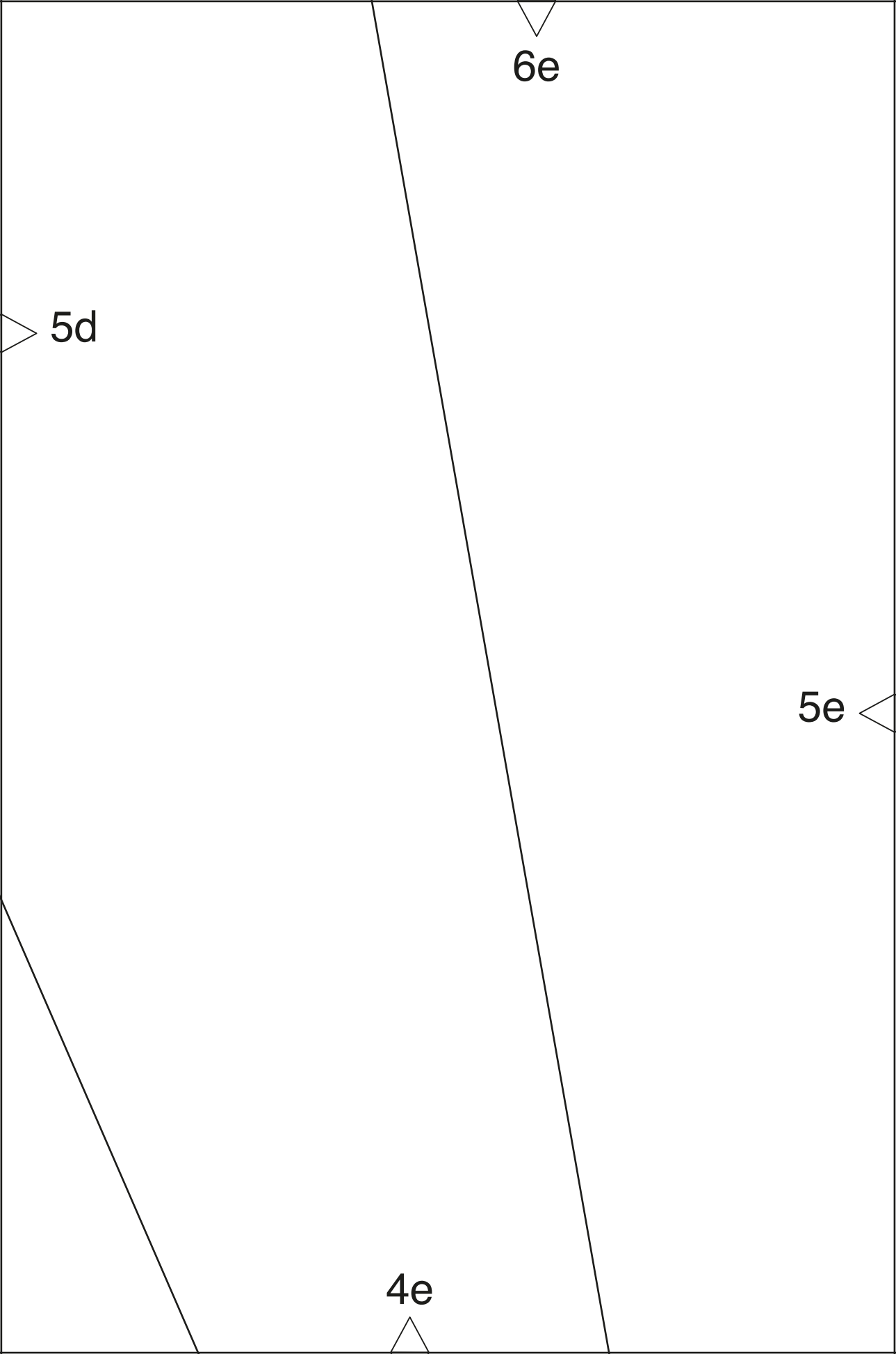
6d

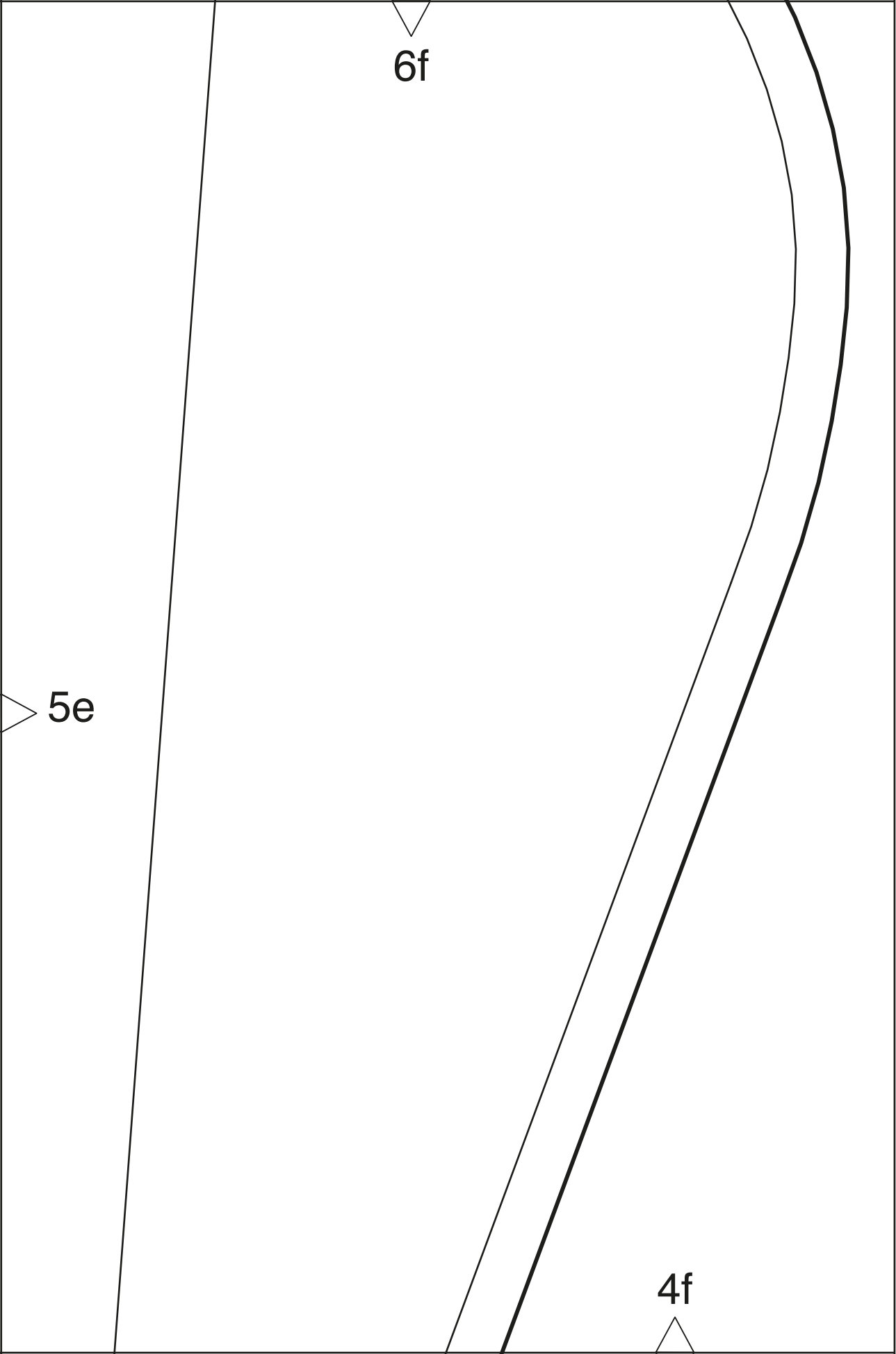
5d

5c

4d

Mod. 6
✂
↓





6f

5e

4f

burda[®]

www.burdastyle.de

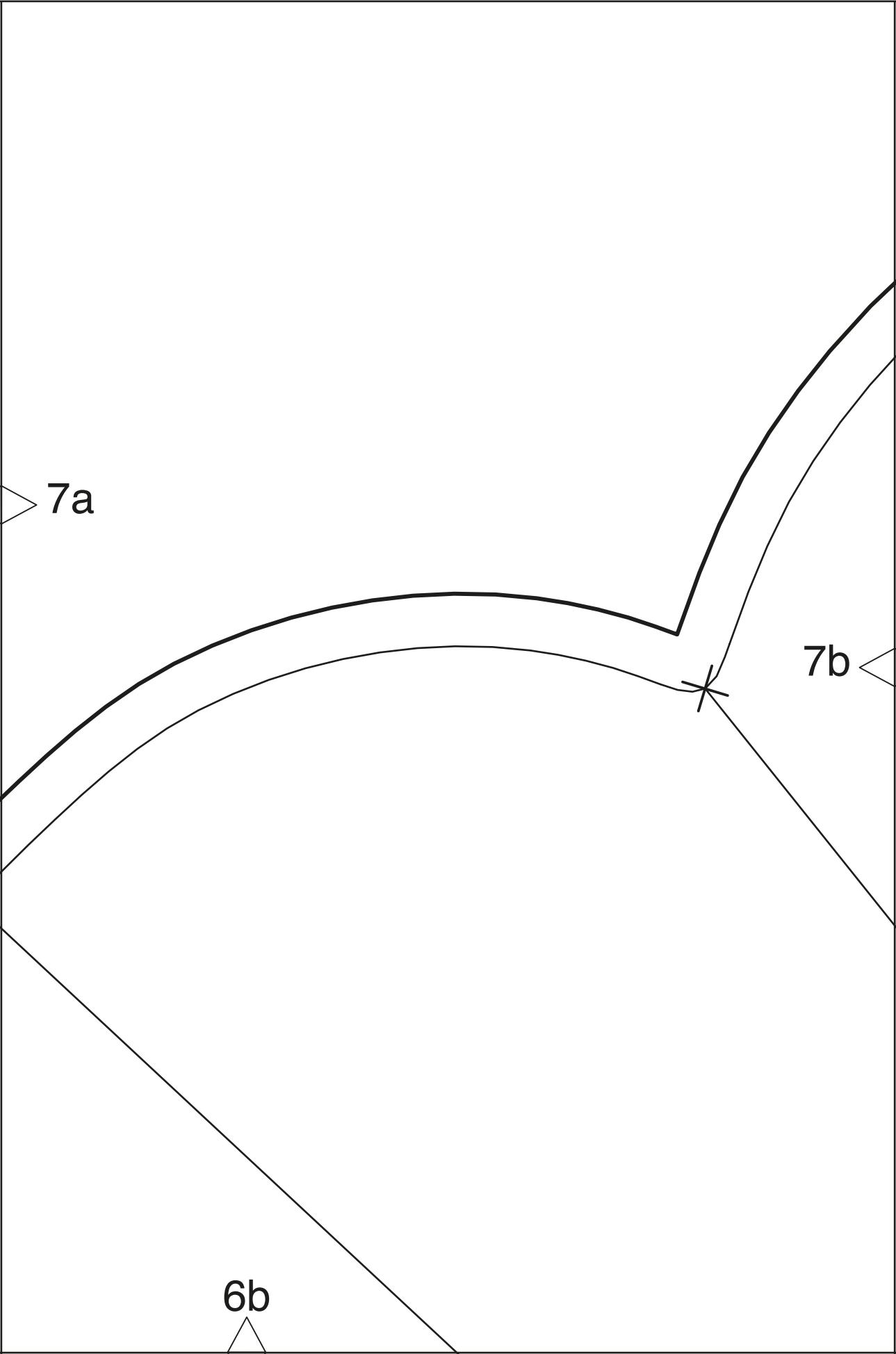
7a

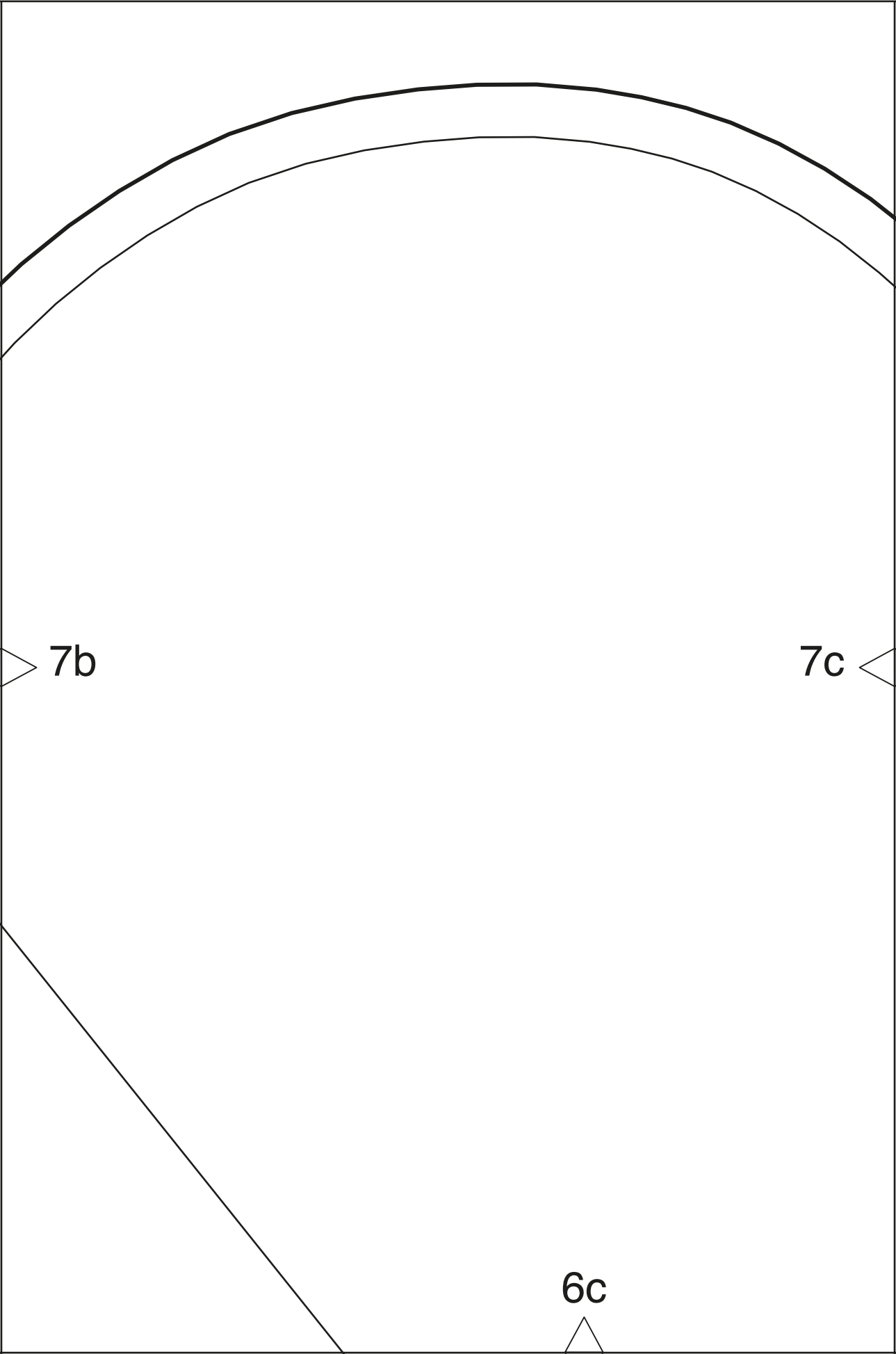
Kontrollquadrat / test square

Seitenlänge / side length

10 cm (4 inches)

6a

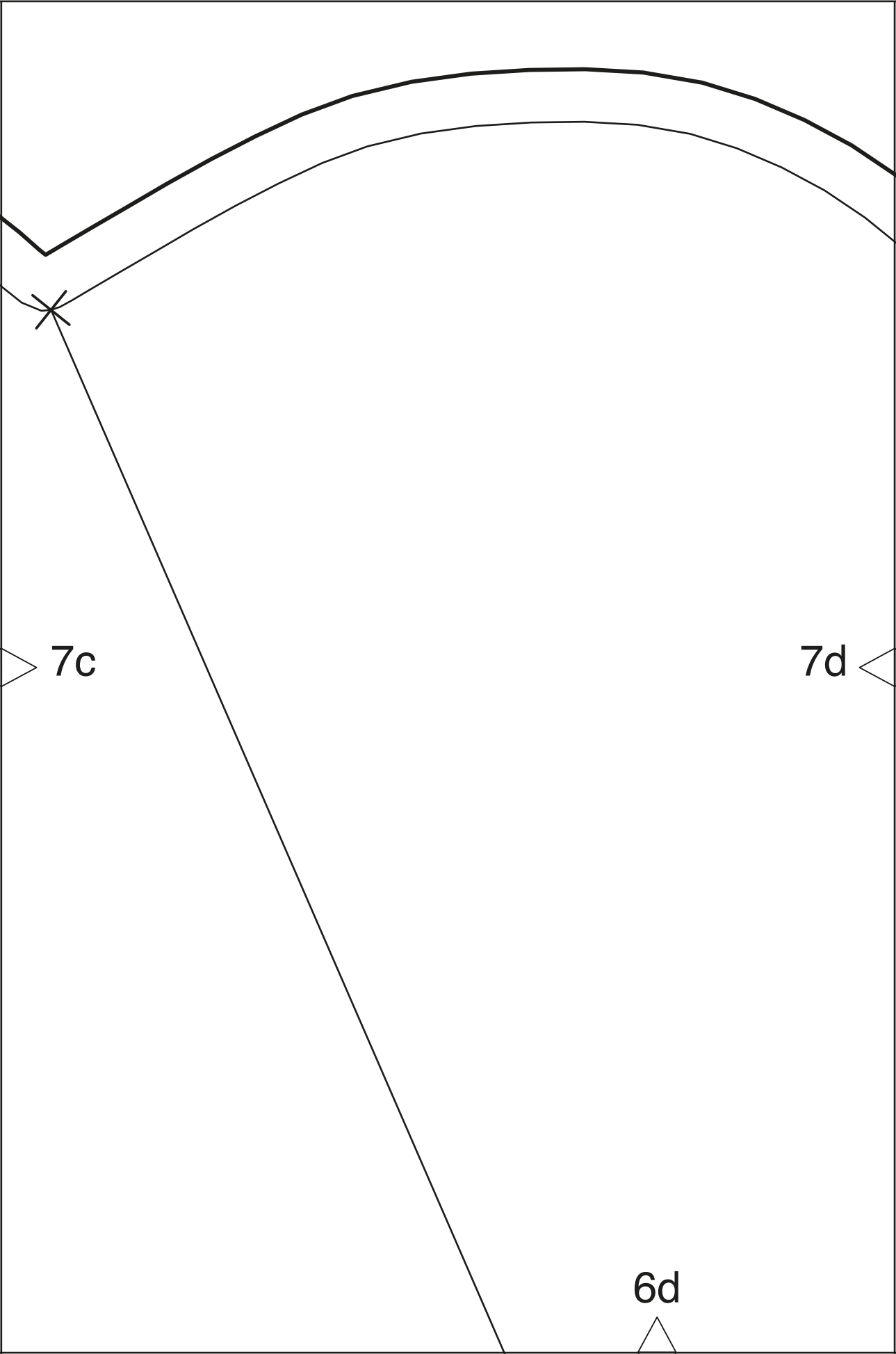


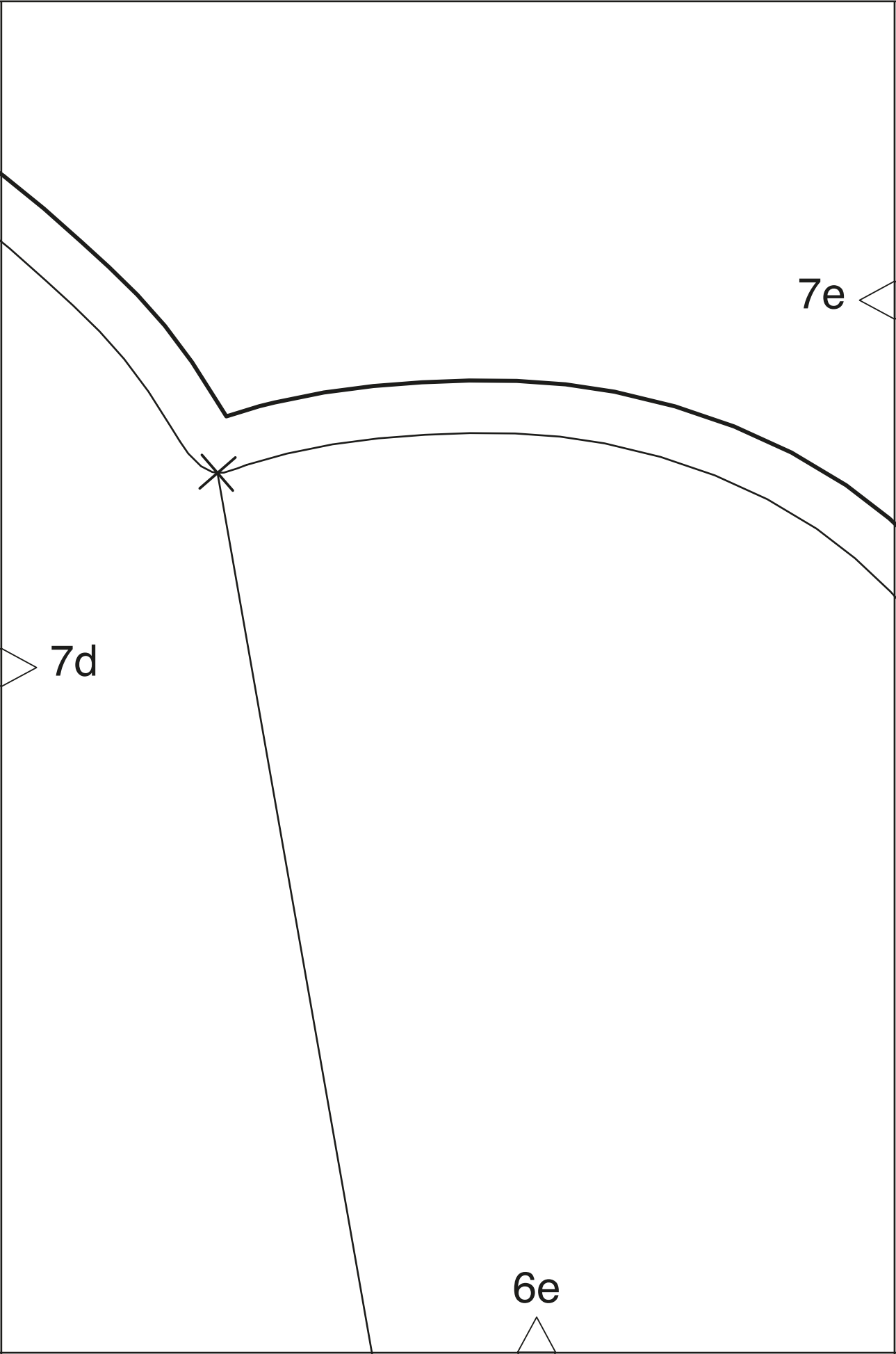


7b

7c

6c





7e

6f

