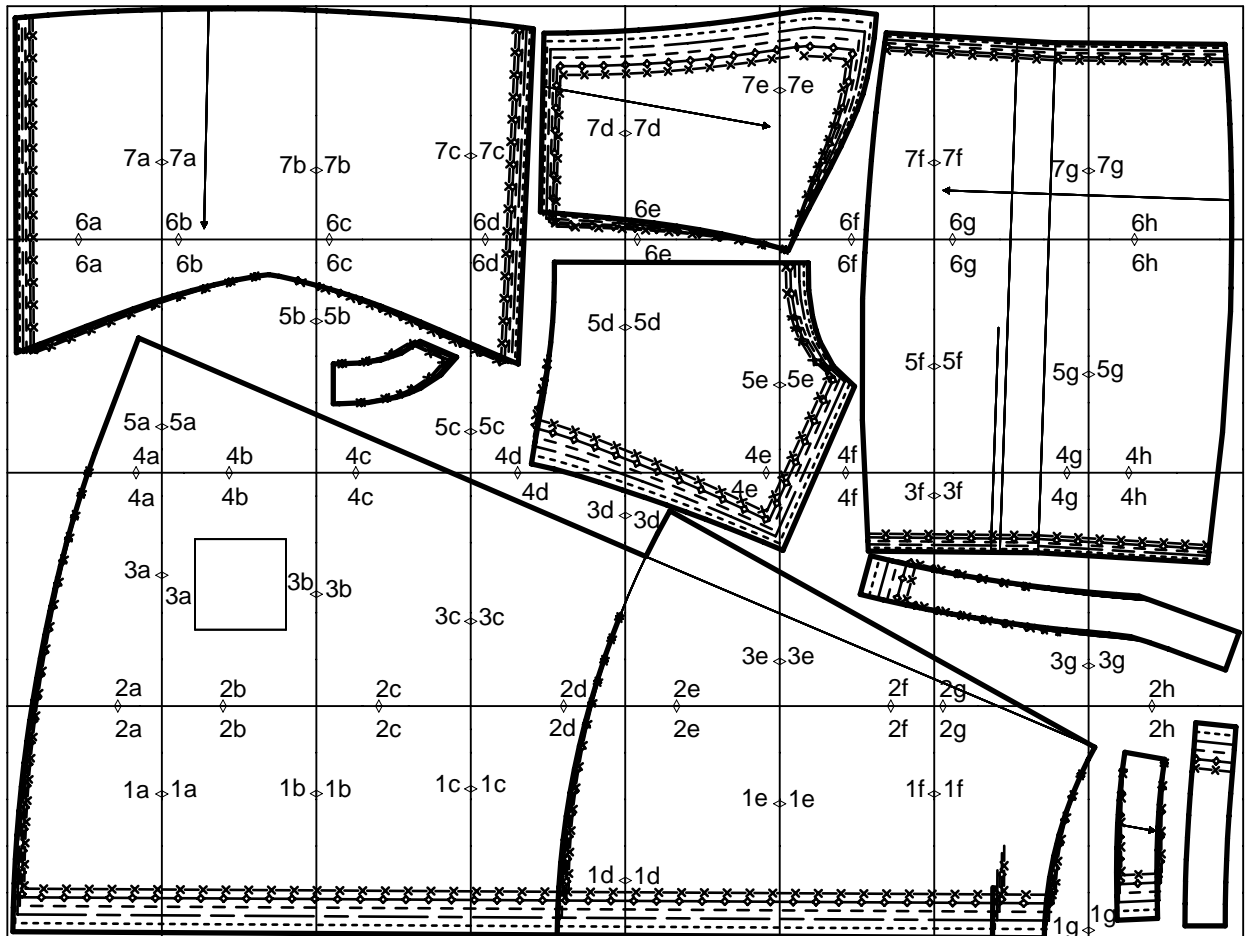


Download-Schnitt

Mod.11 Kleid

Übersicht der Druckseiten



Copyright 2009 by Verlag Aenne Burda GmbH & Co. KG, Am Kestendamm 1, D-77652 Offenburg

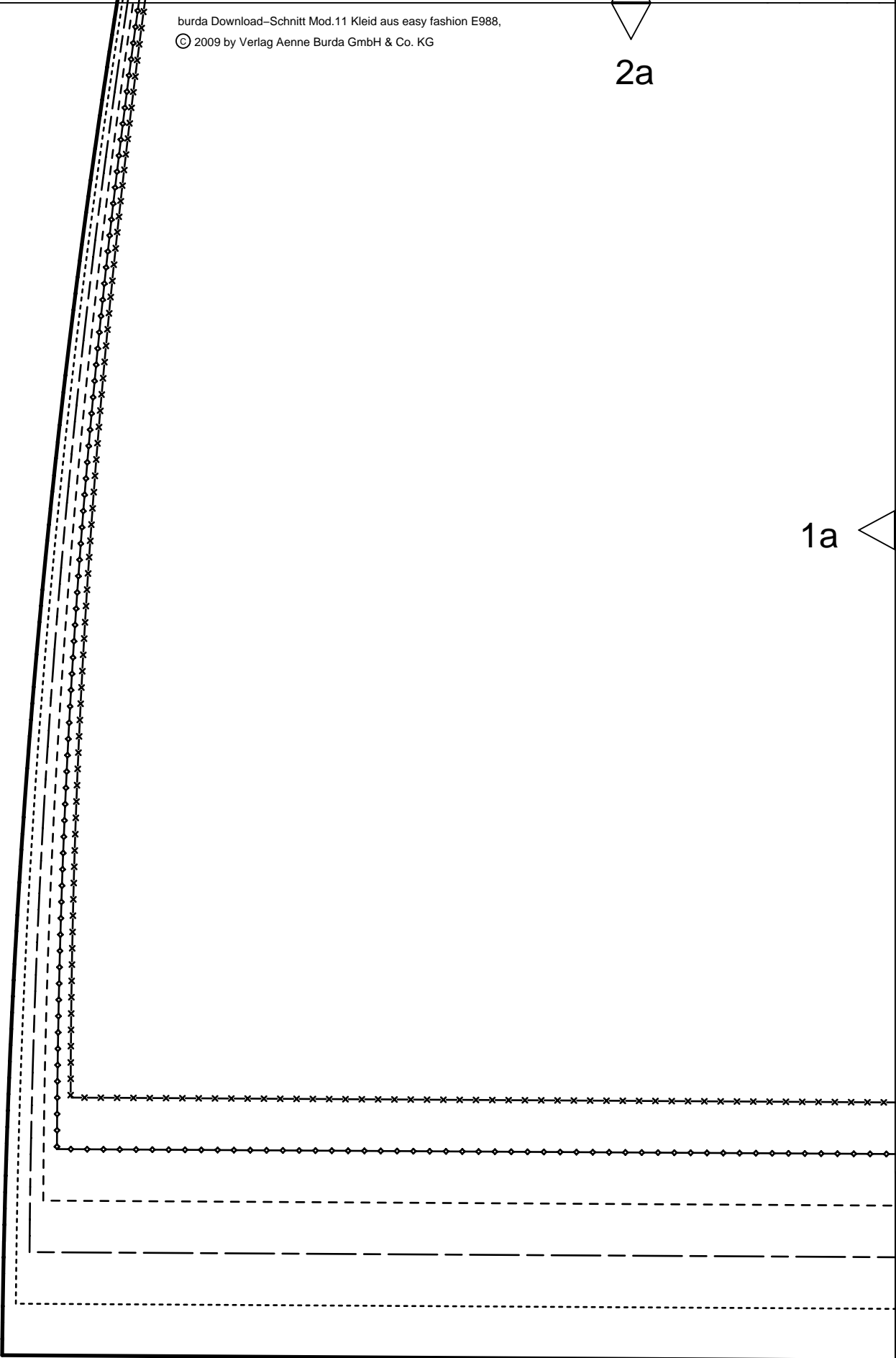
Sämtliche Modelle, Schnittteile und Zeichnungen stehen unter Urheberschutz, gewerbliches Nacharbeiten ist untersagt.

Der Verlag haftet nicht für Schäden, die durch unsachgemäße Handhabung des Schnitts, der Materialien, unsachgemäße Ausführung der Tipps und Anleitungen oder unsachgemäße Nutzung der Modelle entstehen.



2a

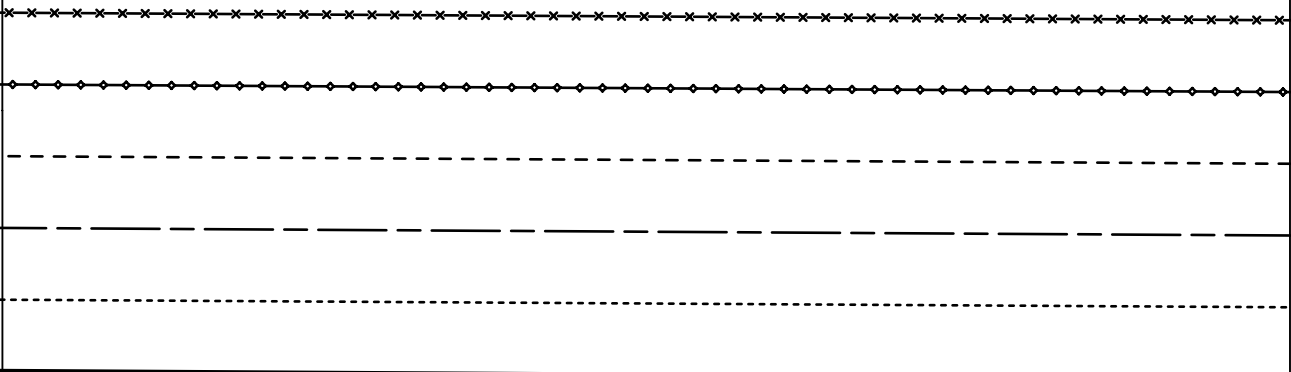
1a



2b

1a

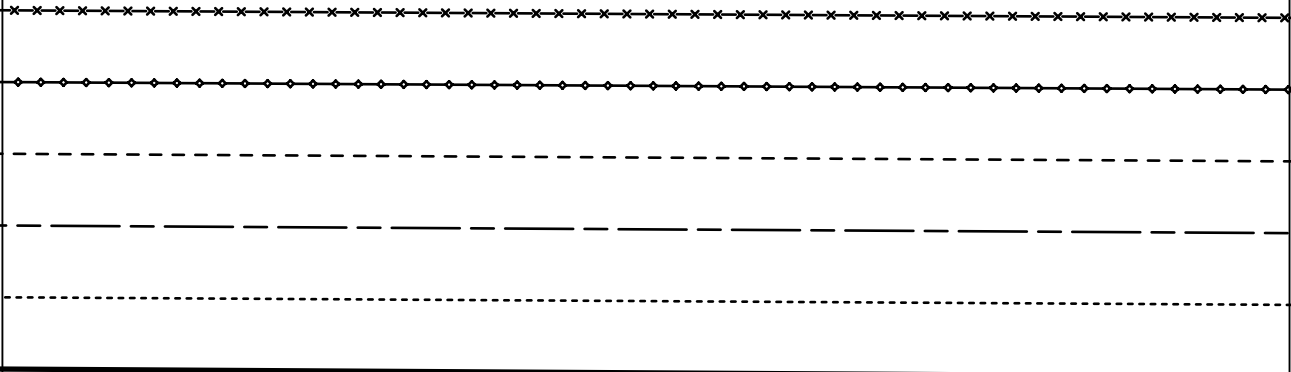
1b



2c

1b

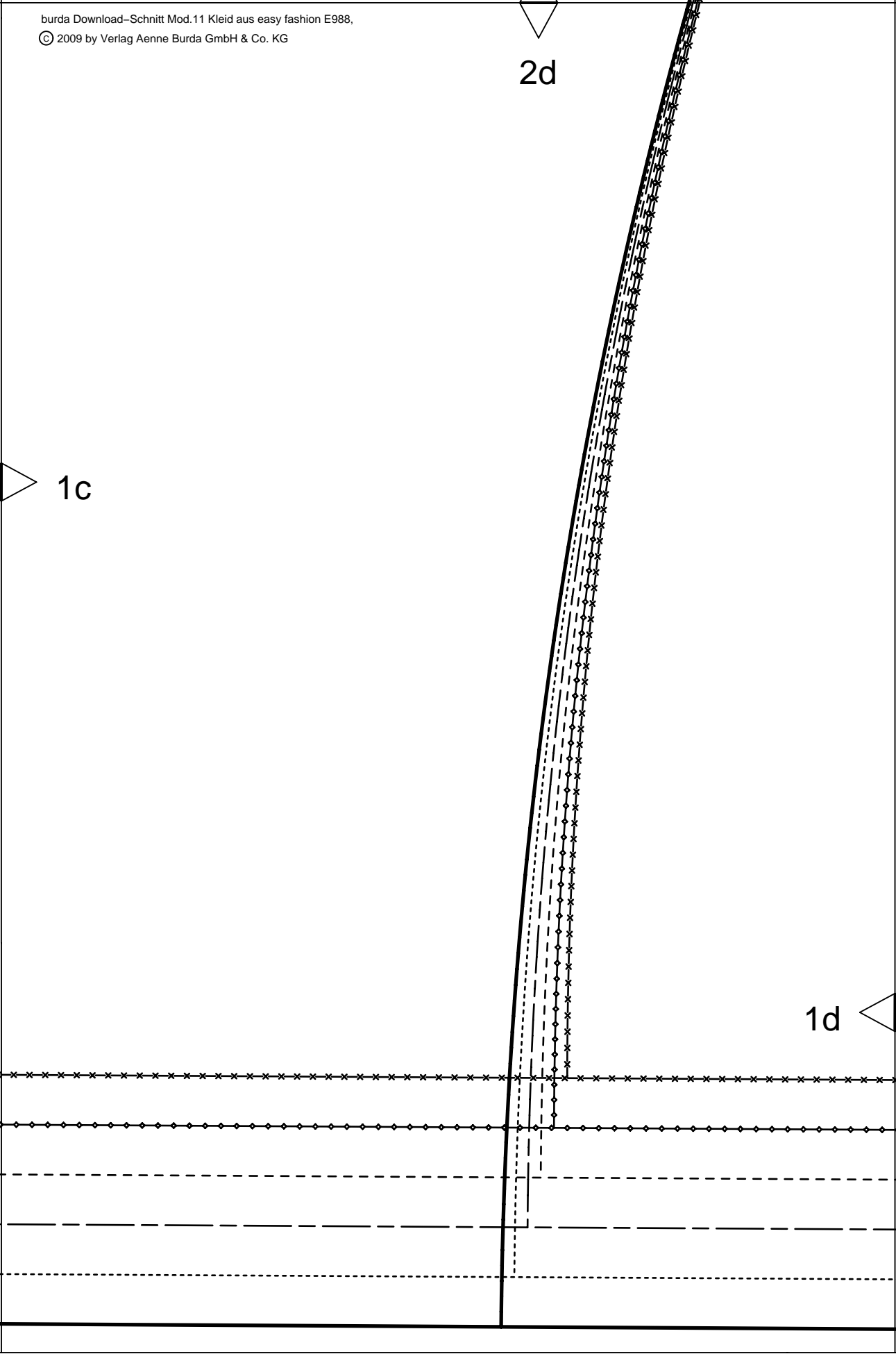
1c



2d

1c

1d

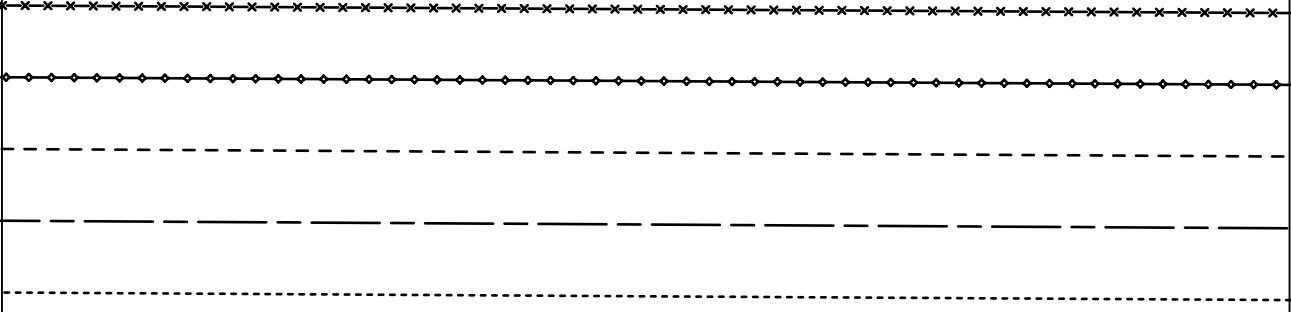


2e

1e

1d

vordere & rückwärtige Mitte Stoffbruch
center front & center back, fabric fold
СЕРЕДИНА ПЕРЕДА И СПИНКИ СГИБ



2f



vordere & rückwärtige Rockbahn
skirt front & skirt back
СРЕДНЯЯ И ЗАДНЯЯ ЧАСТЬ БЮЖА

A,B

im Stoffbruch
2 X on the fold
СЛИВ ТКАНИ

Mod. 11

burda®
www.burdaformat.com

1f

1e

34

36

38

40

42

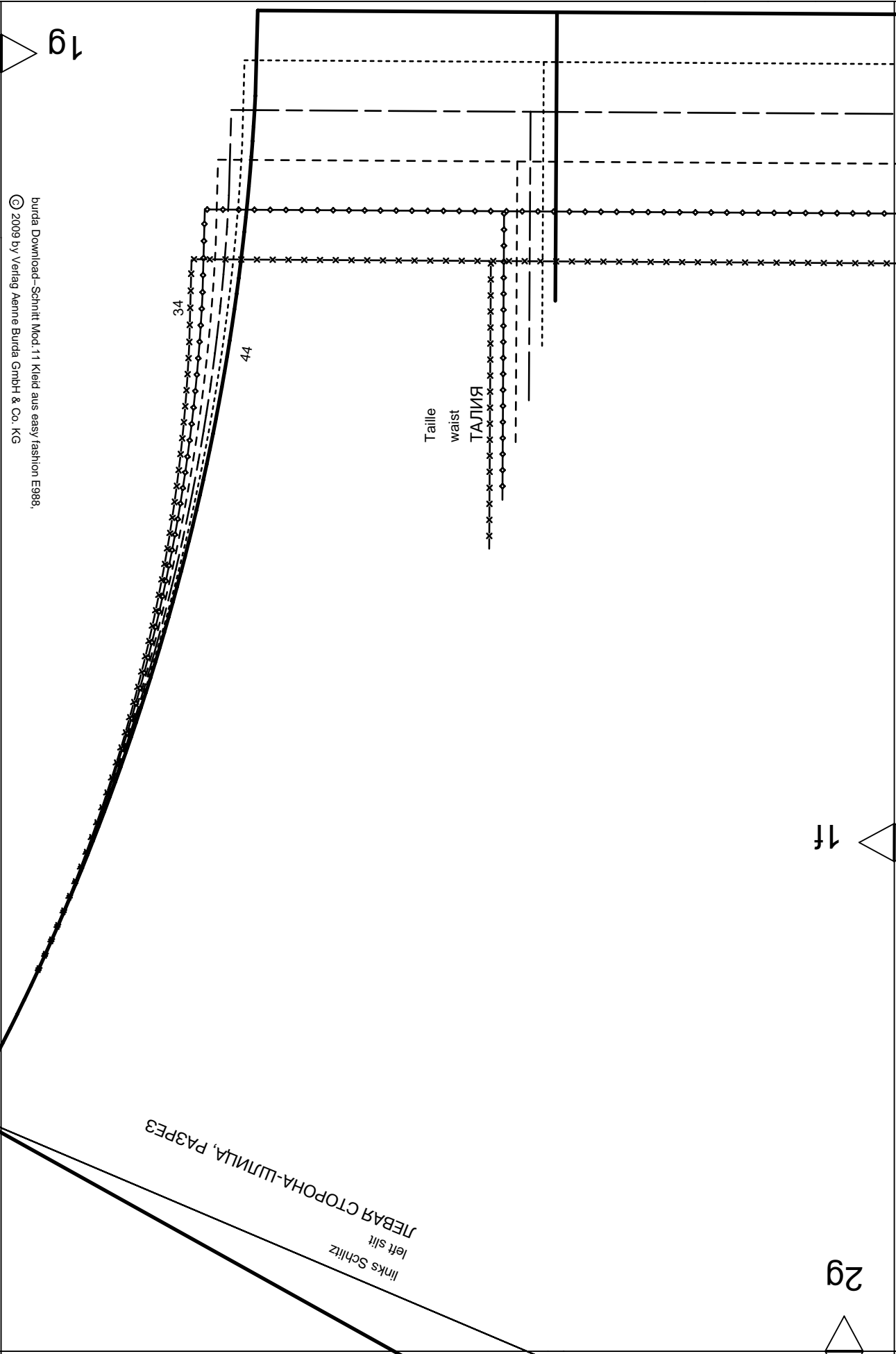
44

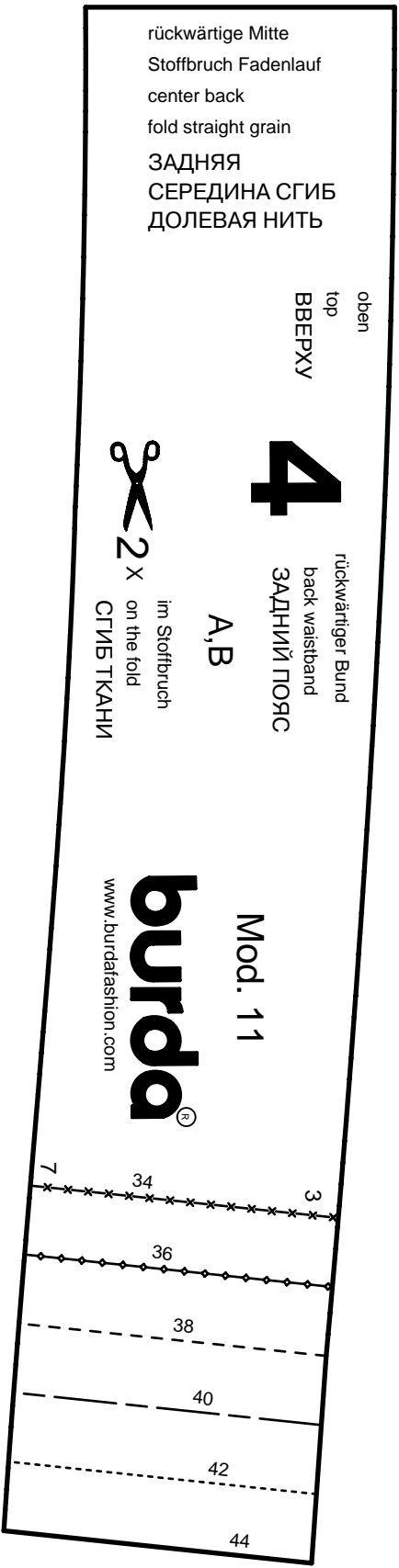
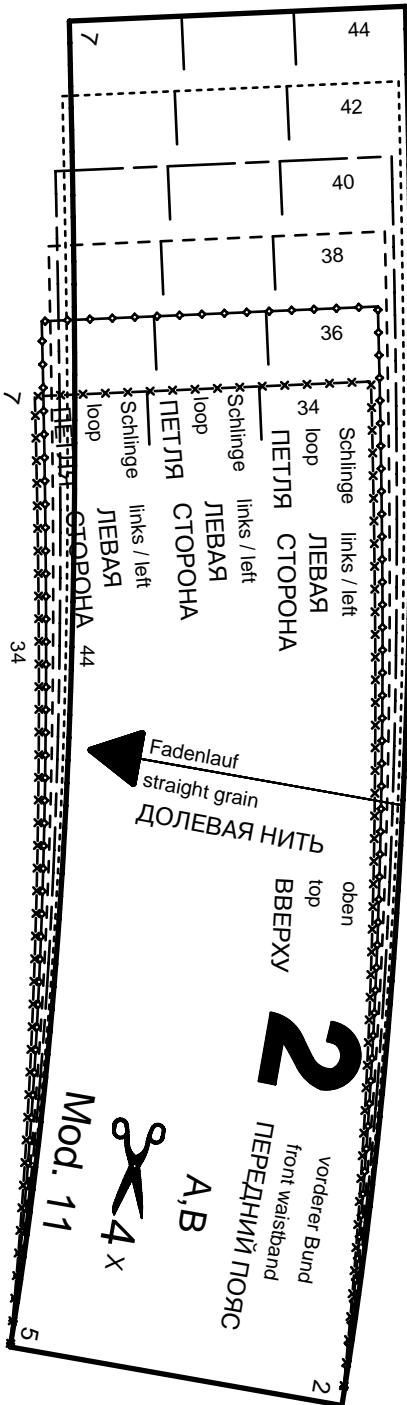
ЛЕВАЯ СТОПОНА-ШЛИЦА, ПАЗРЕЗ
left slit
links Schlitz

Taille
waist
ТАЛИЯ

34

44





rückwärtige Mitte
Stoffbruch Fadenlauf
center back
fold straight grain
ЗАДНЯЯ
СЕРЕДИНА СГИБ
ДОЛЕВАЯ НИТЬ

oben
top
ВВЕРХУ

4

rückwärtiger Bund
back waistband
ЗАДНИЙ ПОЯС

A, B



im Stoffbruch
on the fold
СГИБ ТКАНИ

burda
www.burdaefashion.com

Mod. 11

2

vorderer Bund
front waistband
ПЕРЕДНИЙ ПОЯС

A, B



Mod. 11

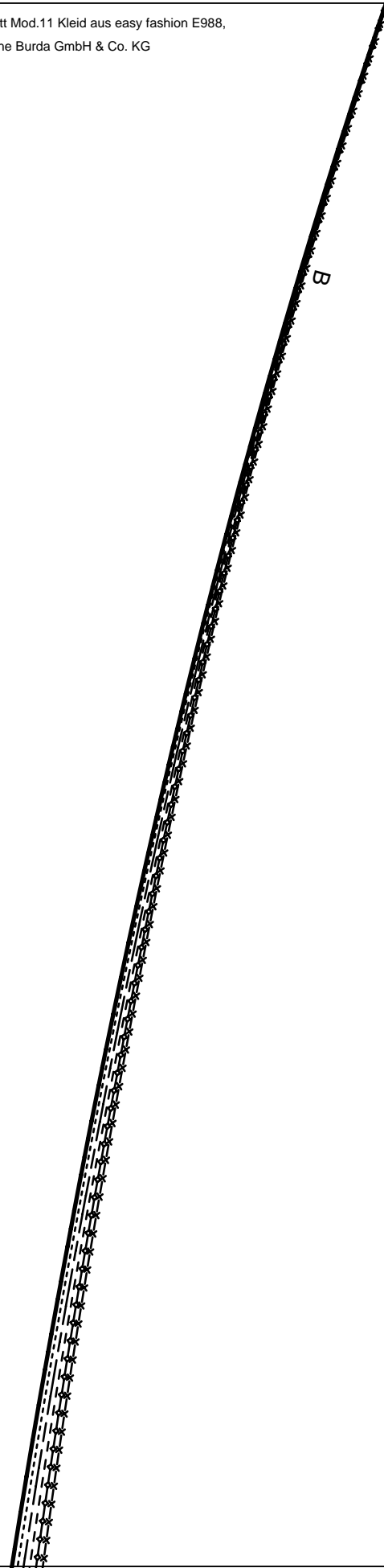
oben
top
ВВЕРХУ

4a

B

3a

2a





4b



3a

Kontrollquadrat / test square

Seitenlänge / side length

10 cm (4 inches)



3b

2b

4c

burda[®]

www.burdafashion.com

3b

3c

2c

burda Download-Schnitt Mod.11 Kleid aus easy fashion E988,

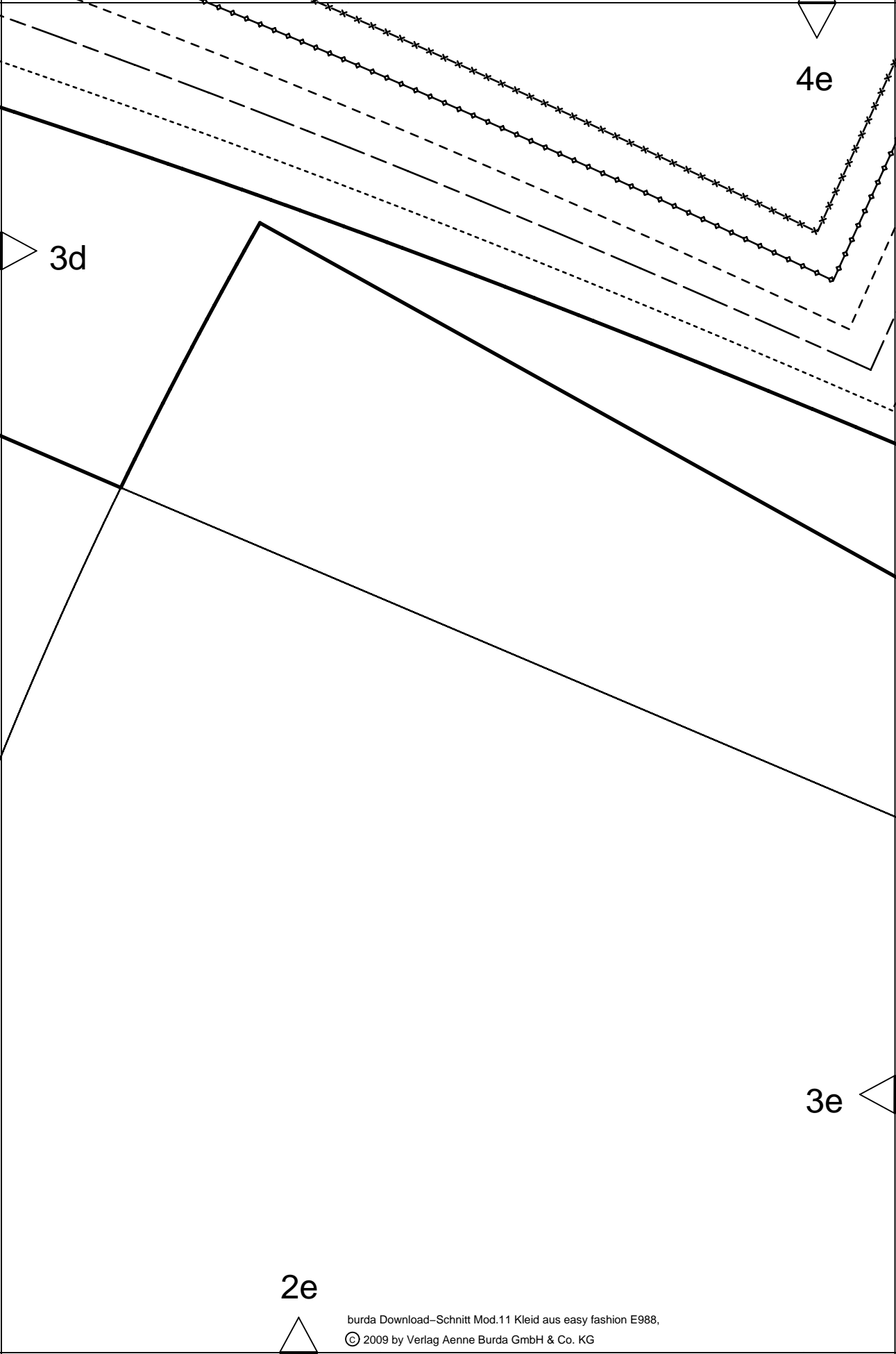
© 2009 by Verlag Aenne Burda GmbH & Co. KG

4d

3d

3c

2d



4e

3d

3e

2e

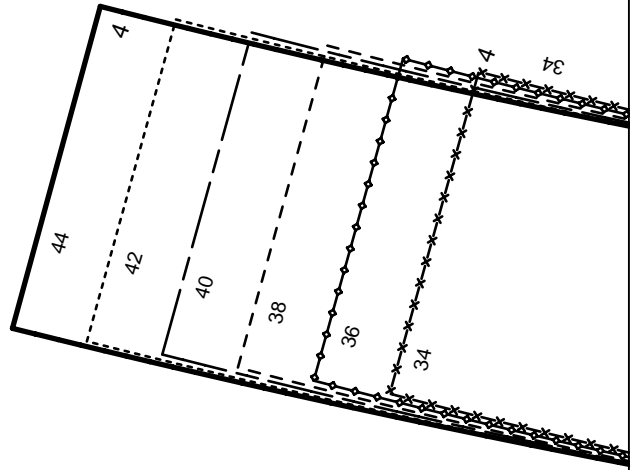
4f

34

44

3f

8

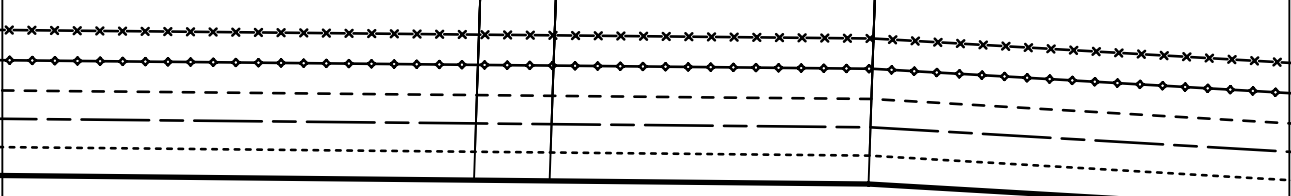


3e

2f

4g

3f



www.burdafashion.com
burda[®]
 Mod. 11

BEЙKA ГOPЛOBИHИИ ЛEPEДA, ПOЛOЧKИ
 A, B
 4x
 scissors icon
 front neckband
 vorere Ausschnittblende

5

3g

links Schlitz
 left slit
 ЛEBAY CTOPOHAY
 ШЛИЦA, PАЗPEЗ

2g

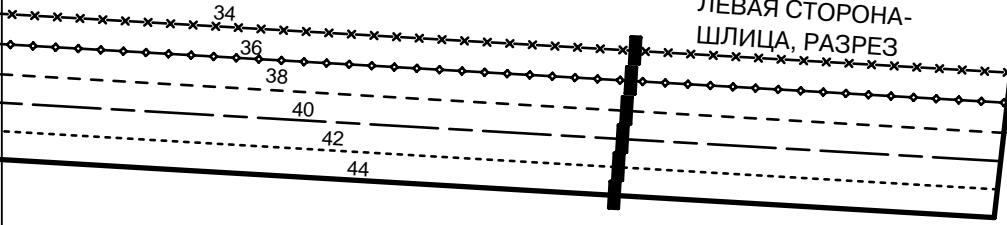
4h

34

44

links Schlitz
left slit

ЛЕВАЯ СТОРОНА-
ШЛИЦА, РАЗРЕЗ



44

34 - 38

34 - 38

ПРАВАЯ СТОРОНА
rechts / right

ПЕТЛЯ
loop

Schlinge

ЛИНИЯ СЕРЕДИНЫ ПЕРЕДА
vordere Mitte Fadenlauf

ПРАВАЯ СТОРОНА
rechts / right

ПЕТЛЯ
loop

Schlinge

ЛИНИЯ СЕРЕДИНЫ ПЕРЕДА
center front straight grain

ПРАВАЯ СТОРОНА
rechts / right

ПЕТЛЯ
loop

Schlinge

ПРАВАЯ СТОРОНА
rechts / right

ПЕТЛЯ
loop

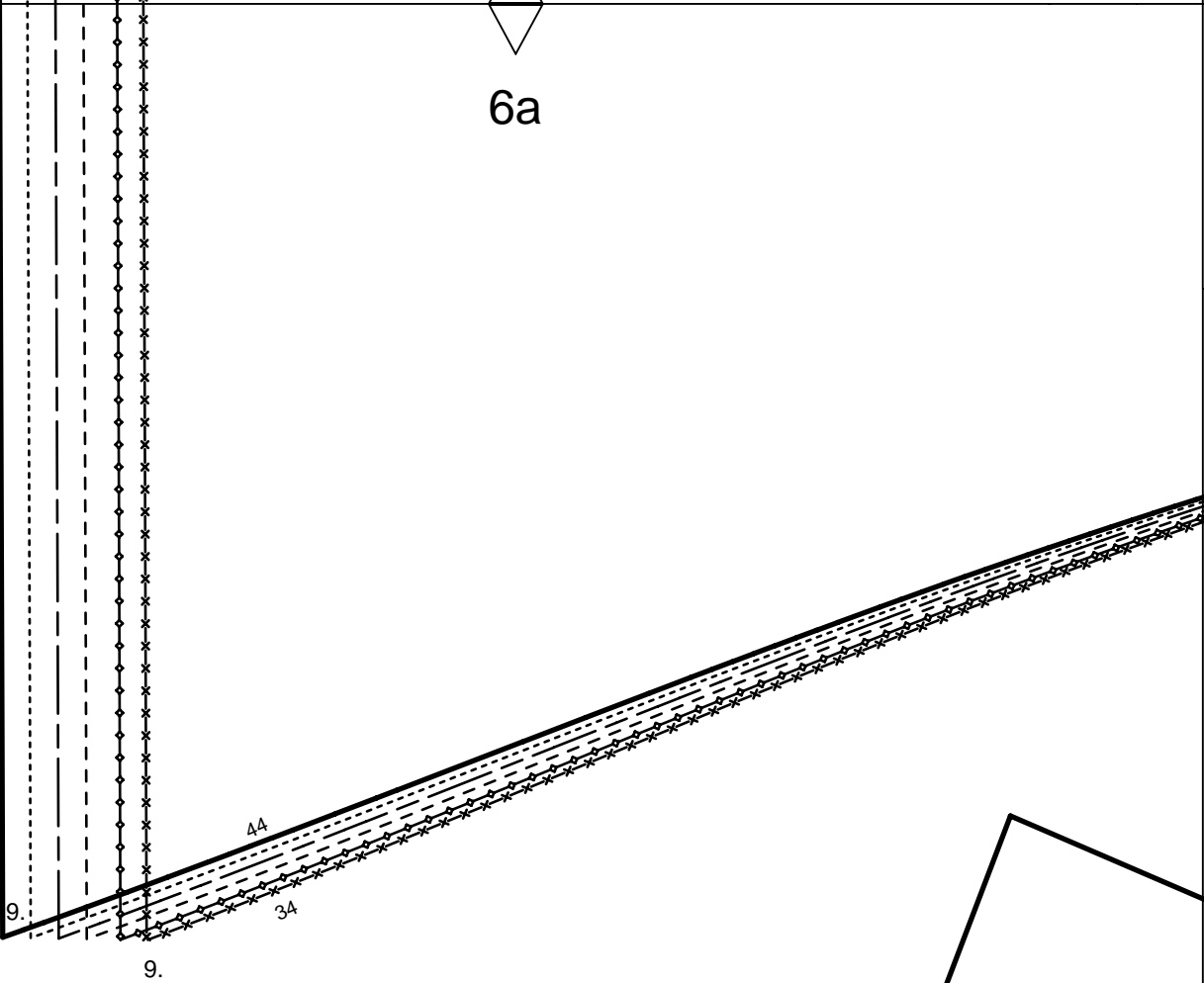
Schlinge

34 - 38

3g

2h

6a



5a

4a

6b

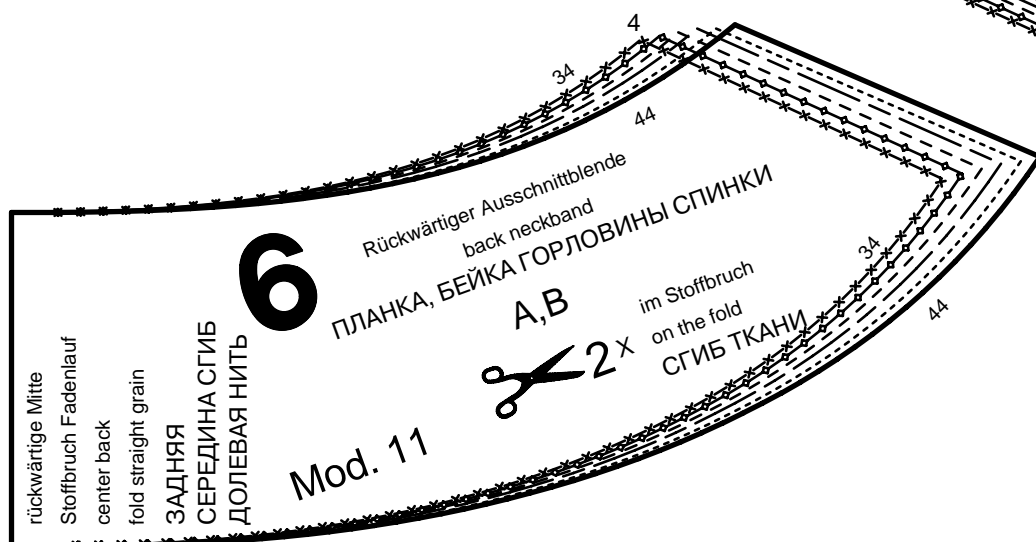
5b

5a

4b

6c

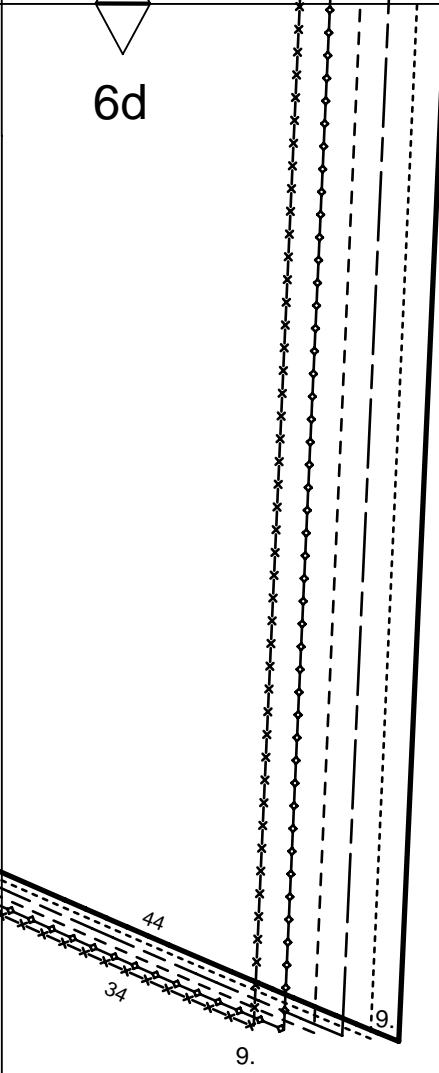
5b



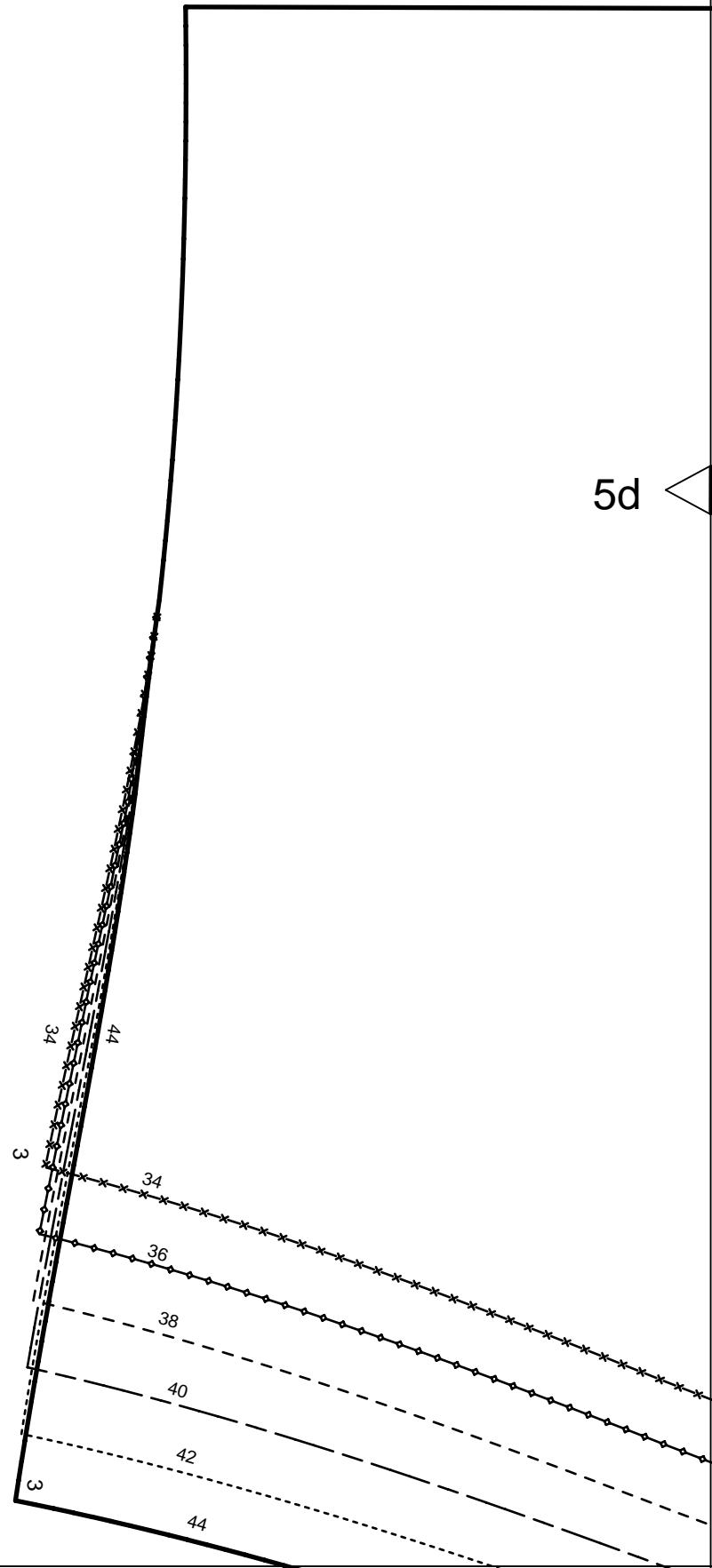
5c

4c

6d

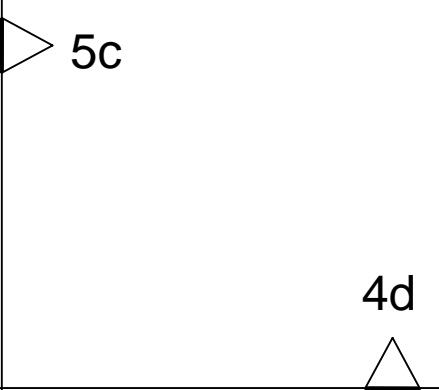


5d



5c

4d



6e

rückwärtige Mitte Stoffbruch Fadenlauf
center back fold straight grain
ЗАДНЯЯ СЕРЕДИНА СГИБ ДОЛЕВАЯ НИТЬ


5d

5e

3

Rückenteil
back
СПИНКА

A,B


1 X
im Stoffbruch
on the fold
СГИБ ТКАНИ

Mod. 11

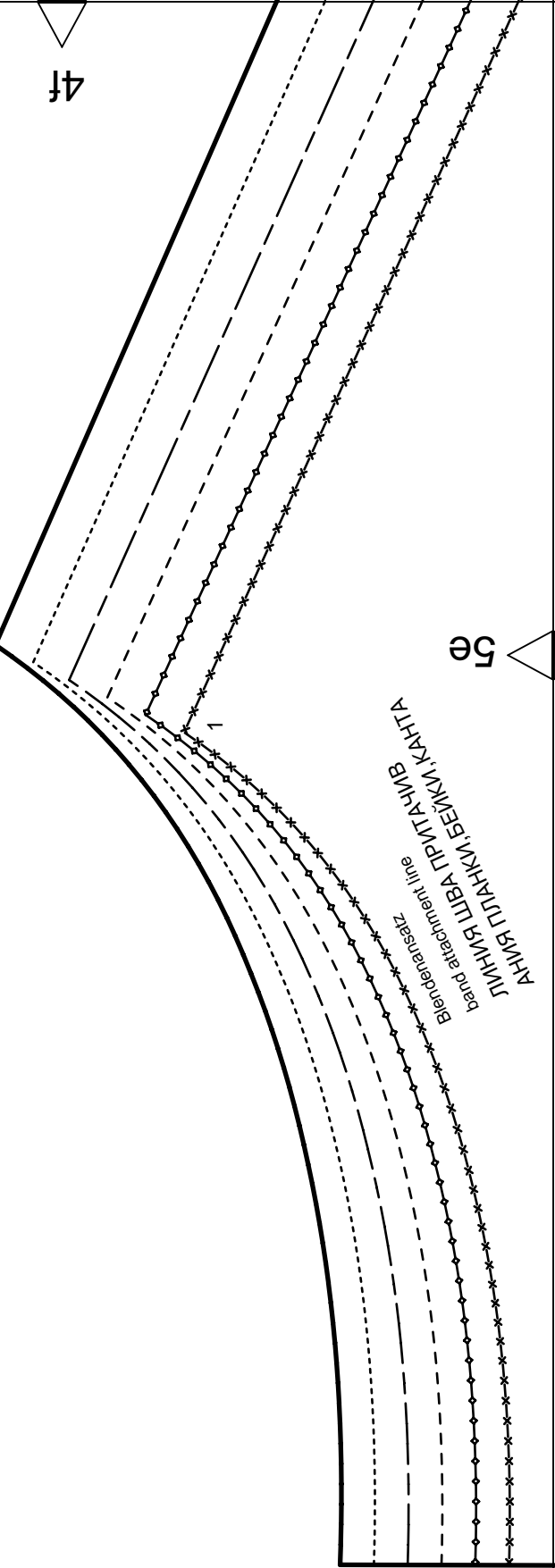
www.burda.com
burda[®]

4e

5e

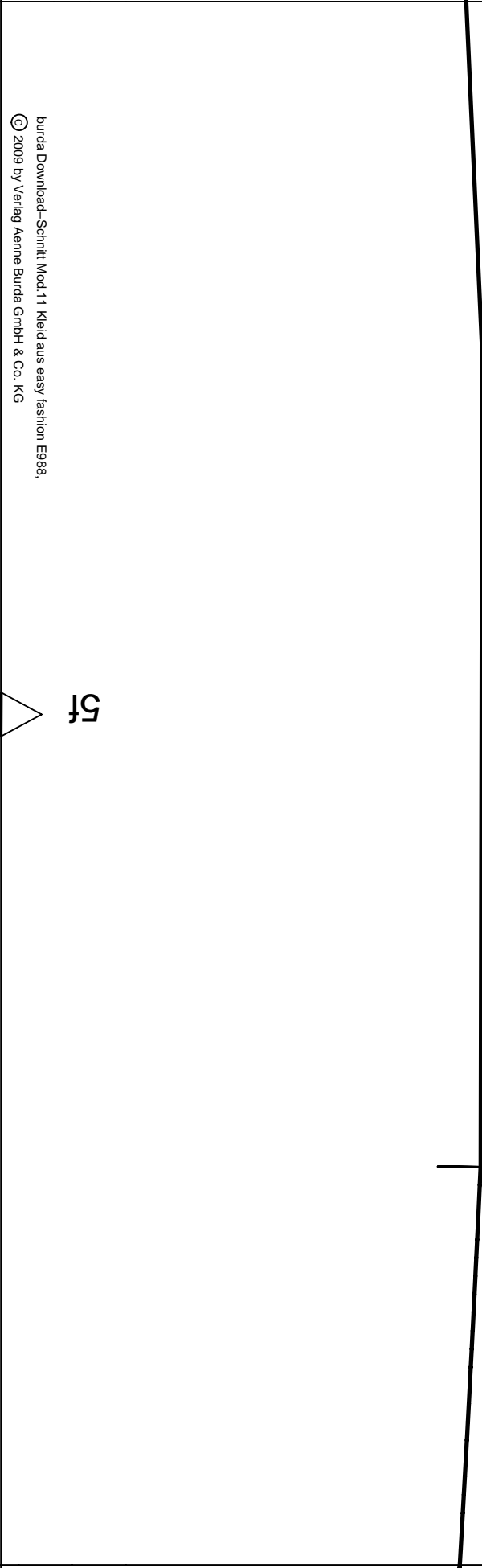
АВНВ ПТДАНН,ЕВКН,КАНТА
ТННВ ЛВА ППТДАНВ
band attachment line
Blendenatz

4f



6f

5f



5f

6g



Gummizug / elastic casing
КУЛИСКА

Umbruch
fold
СГИБ

4g

5g

6h

burda[®]
www.burdatafashion.com

Mod. 11



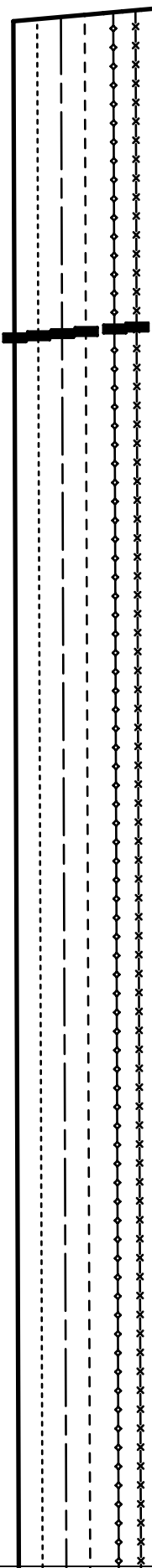
A

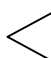
Ärmel
sleeve
PYKAB

8

5g

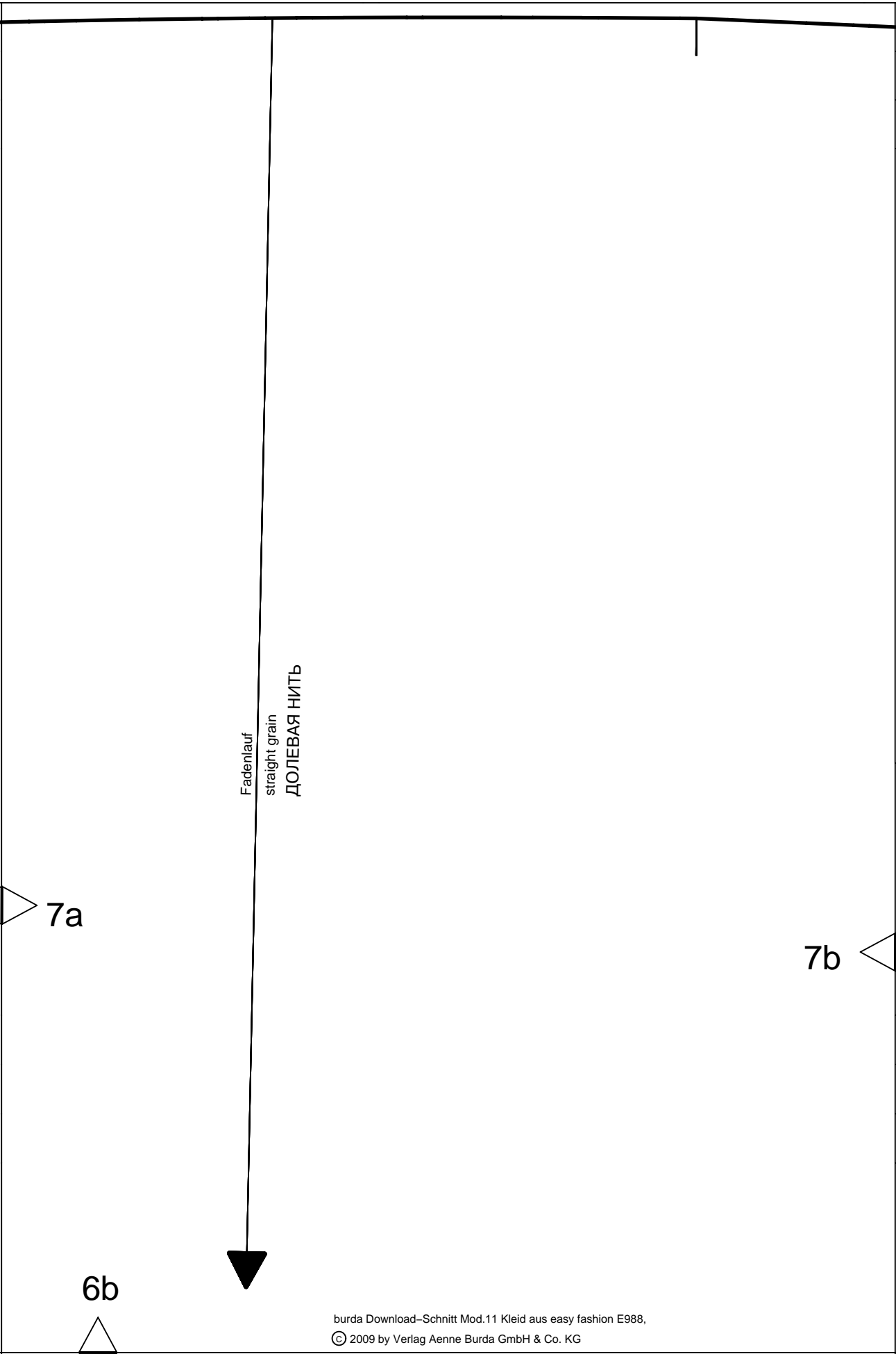
4h



7a 

6a





Fadenlauf
straight grain
ДОЛЕВАЯ НИТЬ

7a

7b

6b

6.

34

9

Ärmel
sleeve
PYKAB

B



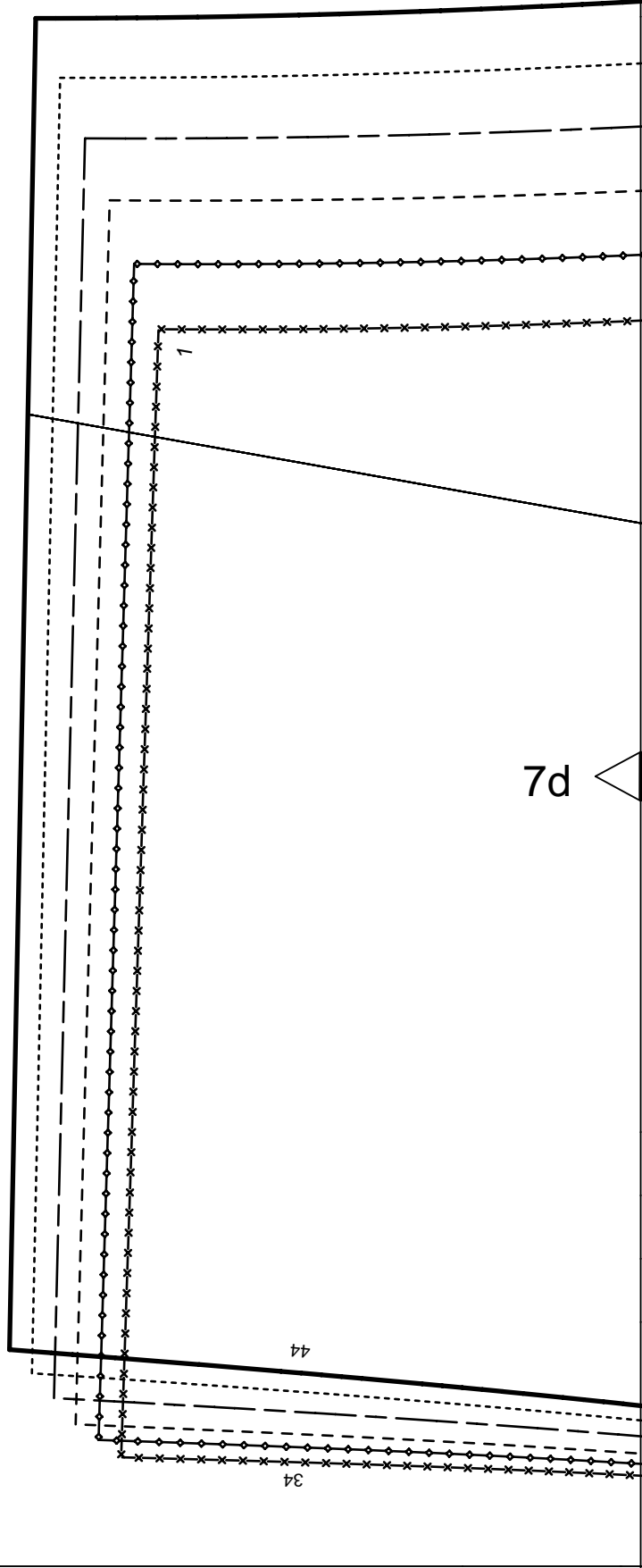
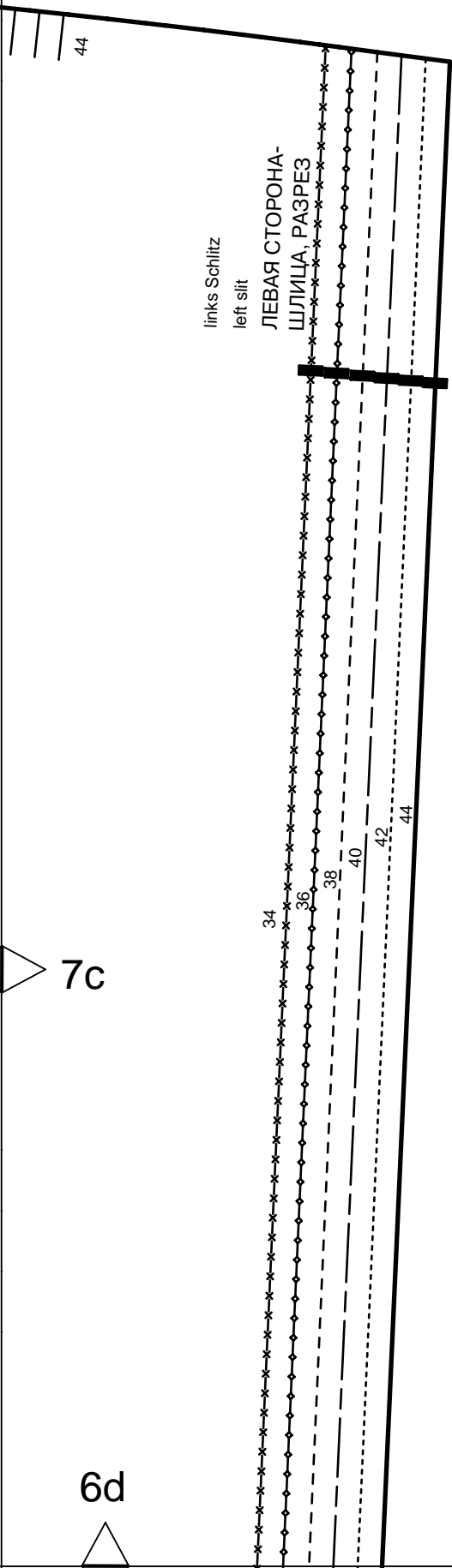
Mod. 11

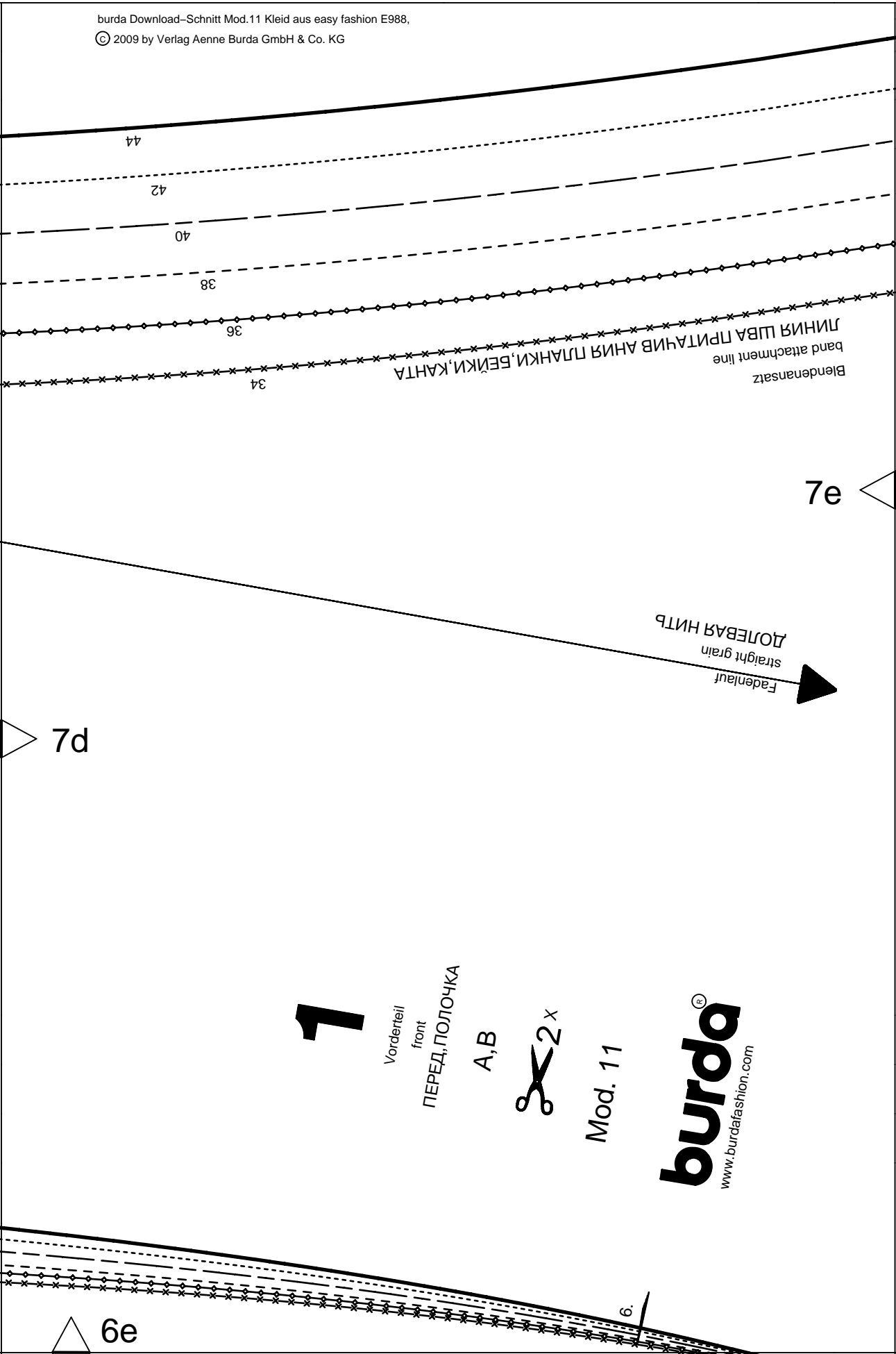
burda[®]
www.burdafashion.com

7b

7c

6c





44

42

40

38

36

34

Blendenansatz
band attachment line
ЛИНИЯ ШВА ПРИТЯЧИВ АНИЯ ПЛАНКИ, БИЖИ, КАНТА

7e

Fadenlauf
straight grain
ДОЛЖЕВАЯ НИТЬ

7d

1

Vorderteil
front
ПЕРЕД, ПОЛОЧКА

A, B



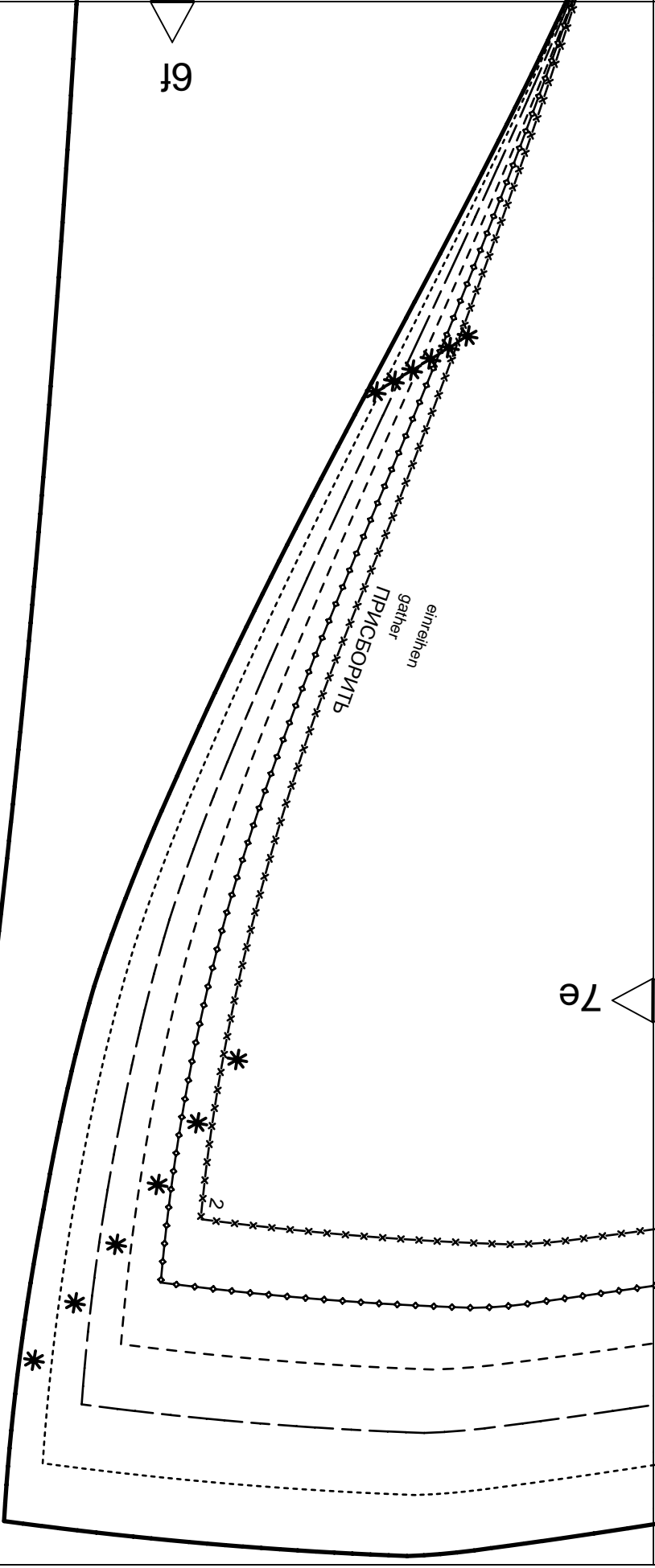
Mod. 11

burda[®]
www.burda[®]fashion.com

6e

6.

7e

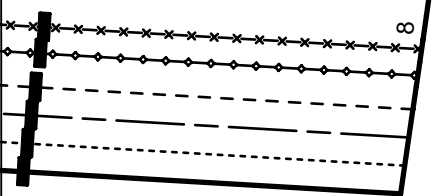


einsreihen
gather

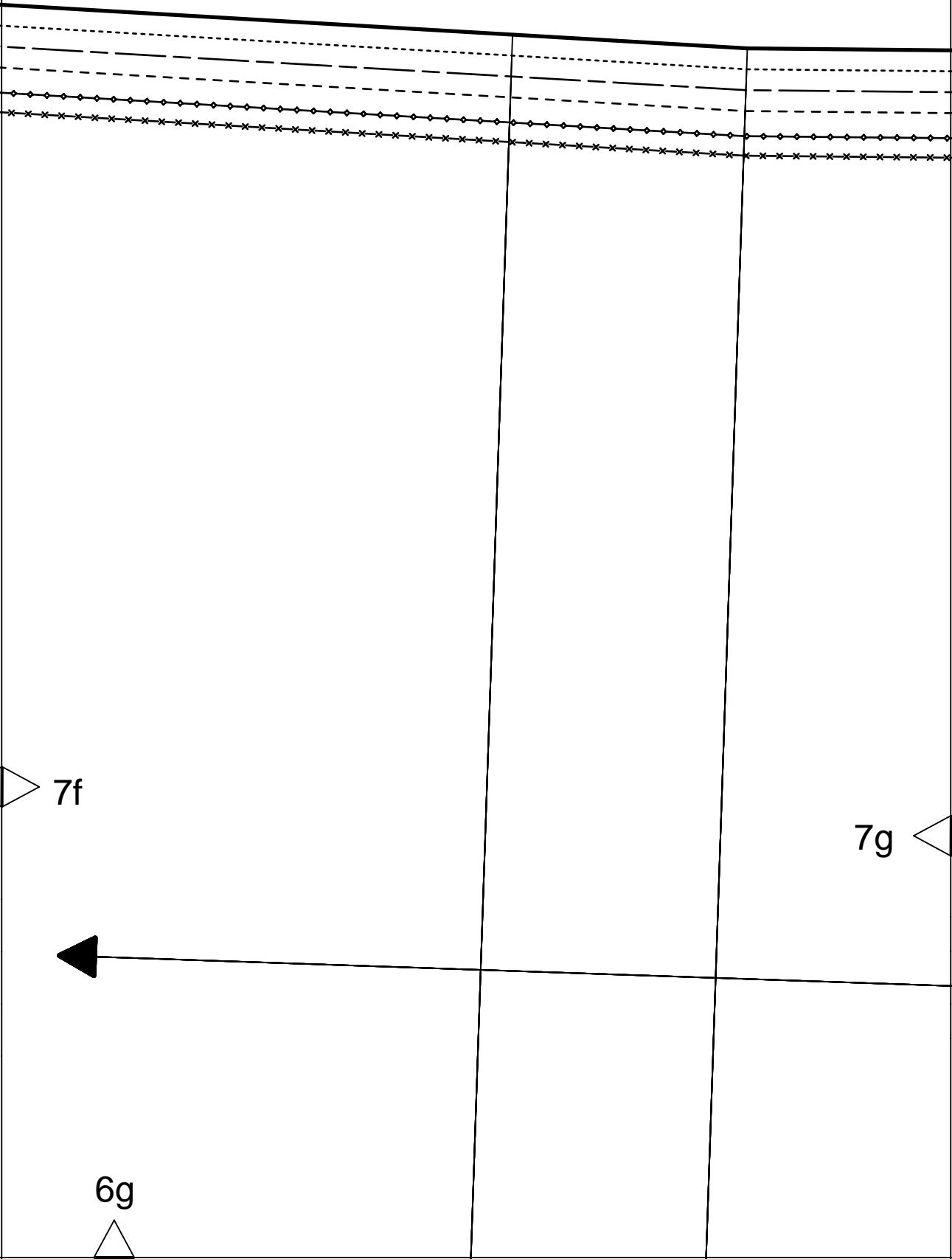
ПРИСБОРИТЬ

6f

7f



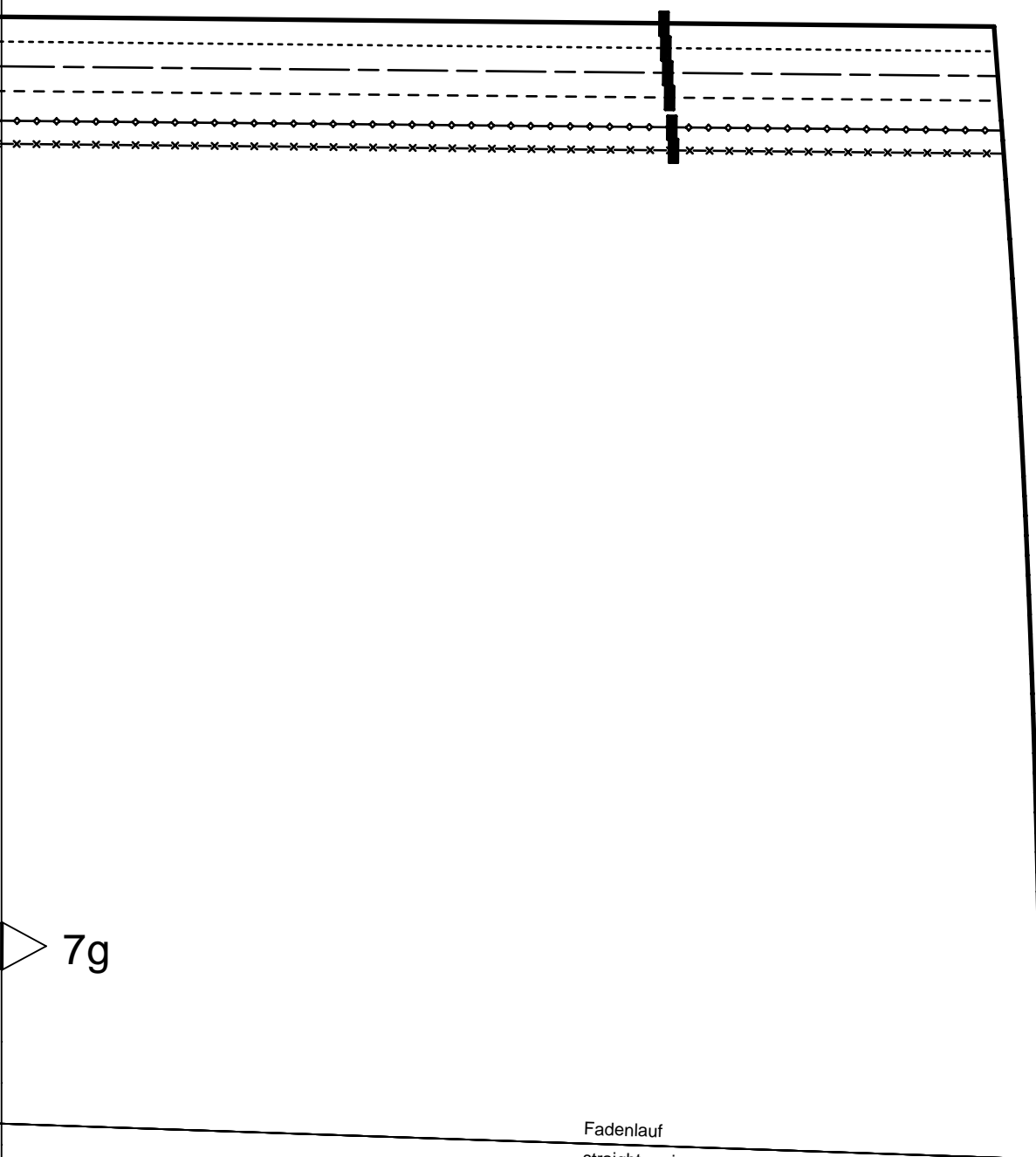
8



7f

7g

6g



7g

Fadenlauf
straight grain
ДОЛЕВАЯ НИТЬ

6h

